

# Exceptionally Good Corn Harvest Nearly Completed

The crop people, corn is a vegetable.

It looks like on the dinner table when it's on the cob or in the husk.

It makes these few acres to see green fields of it growing and the farmer is able to see the "farmers" are the backbone of America," or some such.

For farmers who own these green fields, however, the yellow stuff is a living, and last year it didn't look like it did. This year is better, and has made them feel secure, as far as being worried an exceptional harvest, but everything seems to be about this year's season being with the memory of the past year.

The main problem last year was the pretty early frost, which was too much for the spring, which made it impossible to plant until late in the season. There was too much rain in the summer, which retarded the maturing process of the stalks. There was too much rain in the fall, which hampered harvesting, leaving some farmers with crops still in the fields as late as January.

Main brought with it special problems that damaged harvests even more. Immature stalks are characterized by the individual husks pointing skyward, instead of drooping toward the ground, which makes

them even more susceptible to the attacks of rain. Then, in his upright position, the husks hold water, often creating molds inside.

Molds so formed were particularly damaging to the value of the crop. Ron Moore, manager of Honegger's on Dexter-Chelsea Rd., says that most animals will simply refuse feed made of moldy or highly damaged corn. A pregnant sow, for example, fed moldy corn for three days, will abort, he noted.

Last year's corn occasionally had damage as high as 20 percent, Moore recalls, which is impossible to upgrade. The nutritionist at Honegger's accepts damage up to five percent. After that, corn must be combined with wheat or other grains to improve its nutritional value. And of course, while it's upgrading the value of the corn, it's downgrading the value of the other grain.

But on almost all fronts, things have taken a dramatic reversal this season—so dramatic, in fact, that The Standard was hard-pressed to find a farmer harvesting his corn for a picture accompanying this article. "You'll have a hard time," advised one farmer's wife. "I'd say about 90 percent of the people around here have finished their harvesting."

Again, the weather has been the determining factor in this

year's crop. Beginning at the beginning, Carl Kidd, salesman for Washtenaw Crop Service, notes that the first step in a good crop is dependent upon the ground and planting date. Lighter soils, like sand and sandy loam, were ready to plant in May; heavier soils, including heavier types of clays and loam, weren't dry enough until June. Most of the farms around Chelsea, however, are lighter soils, with the heavier ones concentrated primarily around Ypsilanti and Augusta township, where the yields this fall have been not at all as good as the ones reported here.

Local grower Bob Heller kept his own personal record of the rainfall from April 1 to Nov. 10. "The 28 inches of rainfall I recorded is probably a little bit more than ideal," Heller reports. "But the lighter soils handled it fine. For the heavier soils, it was probably a bit too much."

Relatively dry autumn weather—"there's only been one bad week or so this fall, while the rest has been good," says Bill Ames of the Agriculture Extension Service. "While last year we had all bad and one good"—has aided in the harvest immensely.

Heller called his crop "an exceptionally good one—in both quality and quantity." He says that he had totaled 13,000 bush-

els of shell corn when he finished harvesting his 130 acres a week and a half ago.

Ron Moore agrees heartily with Heller's rating of this season's crop. "Last year the moisture level in the corn was higher than 30 percent—this year it's 20 and below. . . . This year corn is going for \$2.24 a bushel—better than double what it was at this time last year. It's great—the farmers certainly deserve it."

Even things that were expected to go wrong with this year's crop never really surfaced. Corn borers, for example, were said to be "running high this year,"

according to Carl Kidd, the Washtenaw Crop service representative. Heller agreed that he had seen quite a few in the summer, but they had done little damage to his crops.

Corn borers primarily become a problem in wet or windy weather, since the damage they perform is not to the kernels themselves, but rather to the cornstalks. By boring holes through them, they weaken the stalks until they can be easily broken by wind or rain storms, when they fall to the ground and the corn thereby is ruined by resting in water. In an autumn of little rain and winds, however, they do not emerge as a destructive factor because the stalks have not been blown or beaten to the ground.

And even last year's failures provided added elements to this year's crop—Kidd notes that the unharvested crops remaining in fields probably acted as a fine weather cover for this year's crops.

The good harvest is reflected at places like Honegger's, which has its dryers running 24 hours a day every day but Sunday. "We take in 10,000 bushels a day," Moore says, "and we could take more than that—there are trucks waiting outside today, and there have been the last couple of days—but 10,000 bush-

(Continued on page six)



ONLY A FEW AREA CORN FIELDS remain unharvested, and out there on the pickers' things keep looking pretty good—a lot better, certainly, than last year. Above, George Klink works away on Laurence Noah's land, between Werker and Stoffer Rds., during yet another fall day adequate

for harvesting. Area growers report a tremendous improvement in this season's crop over last year, primarily due to the relatively dry spring, summer and fall, which allowed their crops to be planted and harvested on time.

## Santa Coming Saturday for First Chelsea Visit

It must be time to start counting the days till Christmas, because Santa Claus will be in town Friday afternoon.

The jolly old elf will make the first of his Chelsea appearances before the BIG one Dec. 25, at the old Buick garage, 116 N. Main, from 1 to 3 p.m. Kids will receive candy and be able to talk to their favorite Christmas personage in person.

Future appearances will be at the same location and time on Dec. 1, 8, and 15.

## WEATHER

	Min.	Max.	Precip.
Wednesday, Nov. 14	43	66	.05
Thursday, Nov. 15	41	57	.73
Friday, Nov. 16	29	46	.00
Saturday, Nov. 17	29	49	.00
Sunday, Nov. 18	32	49	.01
Monday, Nov. 19	32	52	.00

By H.K.L.

# The Chelsea Standard

## QUOTE

"What is against truth cannot be just."  
—St. Augustine.

ONE HUNDRED-FOURTH YEAR—No. 23

12 Pages This Week

CHELSEA, MICHIGAN, THURSDAY, NOVEMBER 22, 1973

15c per copy

SUBSCRIPTION: \$4.00 PER YEAR

## Basketball Season Opening With Two Games Next Week

Dedication, hard work, and an admission to "think defense" were the items that Jim Allman mentioned in his announcement last week of the freshman basketball team's members, and the same no doubt holds true for the other two squads.

Right now all three are in the midst of daily practices in preparation for a pre-season scrimmage with Tecumseh, scheduled for Saturday, Nov. 24. Freshman will take the court at 9 a.m., followed by the junior varsity at 11 a.m. and the varsity at 1 p.m.

First season home game with Columbia Central on Tuesday, Nov. 27, is also rapidly approaching. The action begins that night with the junior varsity at 6:30 p.m.

Co-captains of the varsity squad, coached by Tom Balistrere, are Matt Gustaf and Tim Treado, both seniors. Other senior members are John Houle, Rick Miller, and Jeff Sprague. Juniors chosen are Dave Alber, Jack Hackworth, Perry Johnson, Ron Kiel, Joe Muldoon, Randy Musbach, Rick Sweeney, Gary Wonders, and Paul Wood.

Under the direction of Coach Paul Terpstra, the junior varsity team will include Randy Davis, Mark B. Galt, Mike Fouty, Randy

eria, Jim Marshall, Bill Rademacher, Howard Salzer, Joel Sprague, Mike Tobin, Dave Watson, and Randy Sweeney.

Coach Jim Tallman's freshman group will field John Adams, Bob

Blank, Larry Cross, Rick Davis, Pete Feeney, Matt Heydauff, Anthony Houle, Mike Check, Tony Roberts, Bruce Stubbs, Dean Thompson, Matt Tobin, and John Toon.

## Area Deer Kill Light

Despite pre-season predictions that this year's deer outlook was the best in five years, area conservation officer Robert Like reports that he has seen only "half a dozen deer killed so far at the most."

The reason for the small kill, Like says, is directly attributable to the small number of hunters in the area this year. "I don't know if they all went up north this year or what," he says, "but they're sure not around here."

He continued that on Saturday, the second day of the season, "hunters didn't come out until about 10 a.m., then everyone was gone by 2 p.m. It was amazing, I guess they went home to watch the football game."

Even though a large number of deer are in the woods, Like reports, few are being killed because there are insufficient hunters to substantially move them around.

No doubt the deer are munching away on their large food supply, enjoying the season a great deal more than the few hunters out to get them.

## Cartoon Show Slated Friday

Chelsea Recreation Department is having an all-cartoon show on Nov. 23 at 1 p.m. in the High School Auditorium. It should be a big event for all the children in Chelsea with prizes of silver dollars, toys, and a \$25 drawing for boys and girls.

Admission is 25 cents for children and adults are admitted free with their children. Tom Balistrere, recreation director, encourages families to come and enjoy the afternoon.



DAVID WOJCIK, Chelsea Punt, Pass & Kick winner who has progressed since his triumph in Chelsea to trophy-winning performances in Ypsilanti and Dearborn, practices with brother Bob at the Wojcicki home on Taylor St. On Thanksgiving day, David will get a chance to show his stuff again, this time during half-time at the Lions-Redskins game at Tiger Stadium in Detroit, where he will compete in the area competition against others in his age group. The game, which is a sellout, will be televised locally for those interested in reviewing the eight-year-old star's form again. If he is successful Thursday, David will be in line for the district competition scheduled for Dec. 16 and then the final step—the Super Bowl in Houston on Jan. 1.

## Thanksgiving Service Set For Wednesday

Children learn in elementary schools that when the Pilgrims celebrated the first Thanksgiving, they were thankful mostly that they were simply alive and well (more or less). They didn't have things like inflation, fuel shortages, and Watergate to worry about, certainly.

Maybe they were luckier then; maybe not. Even if we do have more to worry about these days, we certainly have more to be thankful for.

To add a spirit of community to the annual count-your-blessings day, the Chelsea community Thanksgiving service will be celebrated tonight (Wednesday) at the First United Methodist church, 128 Park St.

The service will steer away from a preaching service format to concentrate on what the Rev. Clive Dickens calls a "family Thanksgiving celebration." Songs of Thanksgiving will be sung, and scripture passages as well as prayers will center on the Thanksgiving theme.

Special musical numbers will be presented by the choir of the First United Methodist church and St. Paul United Church of Christ.

A special thanksgiving offering to be used for some needy cause along the lines of the Christian Rural Overseas Program (CROP) will also be collected.

Churches whose congregations are participating in the special holiday service are the First United Methodist church, St. Paul United Church of Christ, First Assembly of God, St. Barnabas Episcopal church, and the Congregational church (United Church of Christ).

## Christmas Club Payments Total \$110,000

With a ho-ho-ho and a "Merry Christmas" to themselves, Chelsea State Bank customers received their annual Christmas Club payments last week.

This year, \$110,000 was stashed away by 493 thinking-ahead Chelseans who deposited any sum from 50 cents to \$20 per week in their special Christmas Club account. And if they were good, regular depositors, the bank paid the last payment for them.

For those presently enduring the last-minute penny pinching and "charge accounting" that Christmas always brings, maybe this last bit of information from Paul Schaub, vice-president and cashier at Chelsea State Bank, may bring a bit of hope for next year: the Bank is presently opening new accounts for next year's Christmas Club.

## Snowmobile Classes Set for Youngsters

All you young snowmobilers out there itching for big snowfalls had better first get the legal aspects out of the way before taking to your favorite winter sport.

Inverness Snowmobile Club wants youngsters from 12 to 16 (not including 16-year-olds) that they must possess a certificate of instruction to be legally able to operate one of the vehicles alone.

Four instruction sessions planned by the club will provide youngsters with the necessary credentials to avoid confrontations with the law. Classes will begin next Thursday, Nov. 29, at 7 p.m. for registration and the first instruction session, and will continue on four successive Thursday evenings for two hours of instruction.

Four local men who attended a snowmobile instruction workshop in Tucson, will conduct the classes. Members of the club note that both the Washtenaw County Sheriff's Department and the Department of Natural Resources are expected to be checking the age and certification of young snowmobilers quite closely after Jan. 1, when the certificate is required.

There is no charge for the classes, which will be held in the large group instruction room at Beach Middle school.

## Cub Scouts Plan Christmas Tree Sales

After reading in local papers last week that Christmas trees have been added to the ever-growing list of items in short supply, some news from local Cub Scouts should bring a sigh of relief.

Scouts from Packs 415, 445, 435, and 455 will again engage in their annual fund-raising project of selling Christmas trees, beginning Monday, Dec. 3 in Meadon's parking lot on M-52, just south of Old US-12.

While the scouts and their fathers may not be the most capitalistic hard-sell salesmen in the area, they have a little extra-added incentive that helps them along: the profit from the trees is the sole fund-raising event of the year for local packs, and is necessary to support programmed activities for the coming year. Both profits and work will be shared equally by the four groups.

First step in the business venture is on Sunday, Dec. 2, when the boys will assemble at Meadon's parking lot at 1 p.m. with (Continued on page six)

## Chelsea School Costs Rank Among Lowest in Entire Area

A lot of the dilemmas that Chelsea School District taxpayers feel about committing themselves to a bonding proposal the size of the \$4.8 million issue to be considered Dec. 17 should be at least partially relieved by a simple series of comparisons.

A comparison within the District's history itself is quite enlightening. The present level of millages levied in the district for debt retirement, or school buildings alone, has stood for the past two years at three mills, the lowest level in nearly 20 years.

(A mill is equal to \$1 tax levied per \$1,000 of assessed valuation of property—assessed valuation equals generally one-half of the current market value.)

The addition of the three mills to this current levy would bring the total millage for debt retirement to six mills, and would double the average \$37.50 per year presently paid for school buildings. This would amount to a total cost of \$6.25 per month to the taxpayer owning property with a market value of \$25,000, which is the estimated average for farm and village households in the district.

Even this doubled figure is not nearly the highest the district has ever been assessed. In 1956, for example, taxpayers were paying \$8 mills for the building program passed that year, which included the construction of the high school and additions to North and South Elementary schools, in addition to three and one-half mills for the 1951 building program, which built South Elementary

tary, and a little over one mill to pay off the 1953 building program, which built North Elementary. The taxpayer that year, then, was shelling out taxes to pay for more than twice the total that millage will reach with the passage of the proposal next month.

In comparison with other school districts in the area, Chelsea stands near the bottom of the heap in terms of cost per year to the average family for school buildings. At present, taxpayers in the Whitmore Lake district,

## Youths Plead Guilty to Mail Box Damage

Although postal rates are going up again in January, it's doubtful that three Chelsea youths had that on their minds Sunday night. In what is not thought to be any kind of social protest, Steve Dorer, Bruce Guster, and Timothy Wade, all 18, rammed Dorer's 1968 Valiant into three mailboxes on Sycamore Dr., destroying 17 mailboxes in the process.

A witness called in a description of the car, and Chelsea Police apprehended the trio shortly thereafter.

based on property with a value of \$25,000, pay out \$39 per year, followed closely by Milan with \$37.50. Then comes Dexter (\$33.13), Saline (\$31.63), Manchester (\$30.87), and then Chelsea (\$37.50). Only Lincoln trails with \$31.10.

The increased millage will move the district into a third-place position behind Whitmore Lake and Milan.

Further, for total levied for both operation and debt retirement, the additional projected three mill increase for buildings will move the local school district from the very bottom to a relative middle position among other area schools. With a total for both operations and debt retirement of 23.20 mills, passage of the millage will move the Chelsea School District into a third place behind Saline and Dexter among area school districts. Cost per month to the taxpayer will increase to a little more than \$29 for a household with property valued at \$25,000.

## Library Friends Will Host Session On School Election

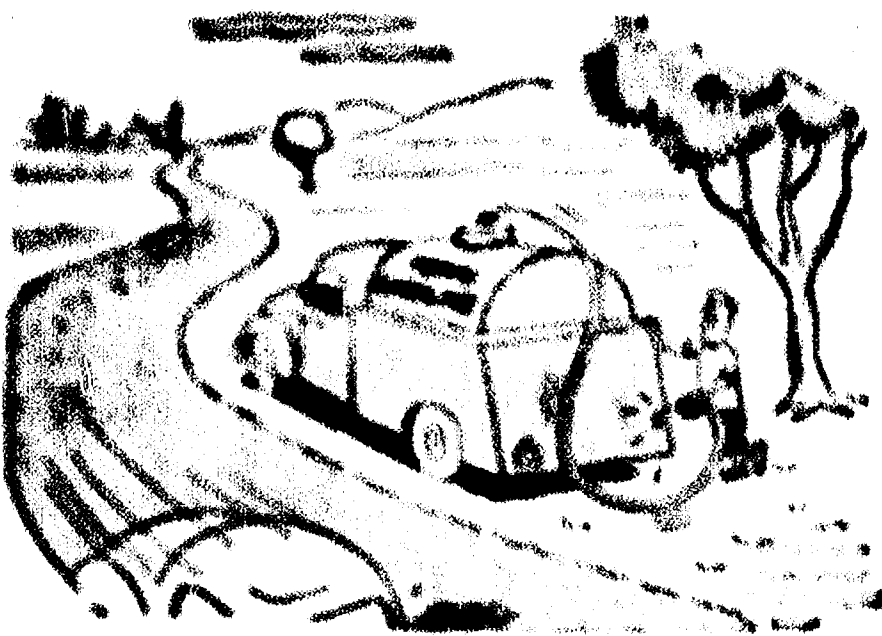
On Thursday, Nov. 29, at 8 p.m., the Friends of the McKune Library will host two members from the Chelsea Board of Education who will explain the proposed school bond election in December. The informal meeting, plus questions, will be held at the library. (Continued on page three)







## CLAFF OF THE WEEK



## Happy Thanksgiving...

Our quality feeds for poultry and farm animals are the best for you.



Larowe and  
Farm Bureau Feeds

## FARMERS' SUPPLY CO.

## November Specials!

### L & R RESTAURANT

PHONE 426-8668  
11485 NORTH TERRITORIAL ROAD

THURSDAY - 5 to 9 p.m.

### SPAGHETTI DINNER

All You Can Eat - \$1.85 per person

FRIDAY - 5 to 9 p.m.

### OCEAN PERCH DINNER

All the perch you can eat  
\$2.10 per person

In addition to our regular menu we are  
now serving our own

### HOME-MADE PIZZAS After 5 p.m.

NEW HOURS: Sun., Tues., Wed., 11-9;  
Thurs., Fri., Sat., 11-11. Closed Mondays



COACH TOM BALISTRERE

## Balistrere Returns To Coach Basketball

Tom Balistrere, head basketball coach who was lured away from Chelsea five years ago to coach at Albion College, has returned.

He comes back in glory having recently been awarded membership in the Outstanding Secondary Educators of America. As a result of the honor his name has been placed in Who's Who in Teaching, 1972-73, and he is now eligible for a national teaching award.

Balistrere, who will once again coach the Bulldog varsity basketball team, won the recognition for his community service and teaching skills while at Big Spring High school, Newville, Pa. He has coached and taught health courses there for the last few years.

While in Newville, he revamped the community's recreation program and planned parks for the community. The award brought a \$500 scholarship to the school.

A native of Harrisburg, Pa., Balistrere was with Chelsea one year before Albion tapped him. Almost immediately he grew dissatisfied with college coaching, missing the relationship a high school coach has with his players. It was then that he took

the position with the high school in his home state.

Balistrere was happy to come back to Chelsea, recalling that "it's a nice place to raise kids. I've always enjoyed this community," he says. He will teach physical education and take up duties as assistant baseball coach in addition to coaching the basketball squad.

Balistrere plans to sharpen the team's running game and focus on a pressing defense for the '74 season. Although the season does not officially open until Nov. 27, he has had 40 prospective players out for a three-week program at the high school this summer. Returning to Chelsea with Balistrere are his wife Charlene, and 2½ year-old Tony.

The Nixon administration has announced that it plans to increase sales of timber in U.S. national forests by 10 percent this year and next. The Secretary of Agriculture said the sales are designed to increase the domestic lumber supply and to help restrain prices.

### SHRIMP EGGS

A shrimp produces about 500-600 eggs in a single spawning.

## CUB SCOUT NEWS

### TROOP 425-

We studied about knife and axe safety. Frank Kornet and Carmer Slocum gave a knife and axe demonstration. Then we played games.

Bob Ostrander, scribe.

### DEN 15, PACK 435-

Our meeting Nov. 14 was at Tom Spencer's house. Wayne Smith brought treats, and then Mrs. Hawks and Mrs. Spencer drove us to Mrs. Hawk's house for an achievement in the Wolf Book. We did a front roll, back roll, and we climbed a rope 20 feet high. Then Mr. Hawks picked teams for a football game. The final score was 0-0. Then we went back to the Spencer's house. Sammy Coomes, scribe.

### DEN 8, PACK 445-

We started to make a stage or our Christmas puppet show and we painted it red. We earned how to do the living circle.

Mark Stoll, scribe.

### DEN 1, PACK 415-

Cub Scouts of Den 1 met Thursday, Nov. 8. The meeting opened with the Cub Scout symphony orchestra. We played two rounds of "She'll Be Coming Around the Mountain When She Comes," using hands, feet, mouth, nose, and throat for musical instruments. After treats, the den worked on skits for the November pack meeting, making items that our early settlers would have used. Tom Hill brought treats. The meeting closed with the Cub Scout promise.

Leroy Dreiman, scribe.

### DEN 7, PACK 445-

We finished our seed turkeys and plan to take them home. They will make nice Thanksgiving decorations.

We are planning to make Christmas decorations for the children at Mott's Hospital. We need empty L'eggs containers. If you have some to donate call Mrs. Tim Whitesall at 475-2538. Next week there will not be a den meeting because all boys and their families are expected to attend the pack meeting at 7 p.m. at the Beach school.

Richard Gaul, scribe.

### DEN 1, PACK 415-

Cub scouts of Den 1, Pack 415 had a double den meeting at the home of their den mother, Alice Atkinson, on Thursday, Nov. 15. This week's meeting and next week's meeting were combined because of Thanksgiving. We took pack lunches and Aunt Alice had dessert, liquid refreshments served were Kool-aid and hot chocolate.

After lunch we practiced on our skit for our Nov. 27 pack meeting. We finished making things for our display, things like the early settlers had to use. At our den meeting we had a guest, Jamie Atkinson.

Chuck Spencer, scribe.

### EMISSION STANDARDS

General Motors has asked Congress to delay and relax 1976 auto emission standards and systematically monitor the company's efforts to curb pollution.

## Drunk Charges Follow Scene At Med. Center

It apparently was a hot time in the old town—and in the Chelsea Medical Center—and eventually in the County Jail—for two area men early last Friday morning.

Chelsea Police arrived at the Medical Center at 2:30 a.m. after receiving a report from the doctor on call that two men were causing some amount of disorder at the center. Officer arrived to find Virgil D. Allen, 38, of Stockbridge, passed out in the doorway to the Medical Clinic. A friend, Chalmers Barker, 28, of Jackson, was hovering nearby, in what officers called a "drunken stupor," but not quite in Allen's state.

Officers assisted in placing Allen on a stretcher, where the staff doctor examined him, since he was complaining of difficulty in breathing. The doctor concluded that nothing was wrong with him that being sober wouldn't have cured.

After taking note of all the symptoms present in the pair, blood shot eyes, slurred speech, staggering gait, and a generally "loud, boisterous, and profane attitude" toward both the officers and the doctor, they were asked not to drive home. Allen called his brother and he and his friend decided to wait in their pickup truck until he arrived.

Half an hour later, however, police spotted the pickup turning from the Medical Center area onto Main. When the vehicle crossed the center line five times before it reached Old US-12, officers decided the situation should be remedied.

Both were arrested—Allen for driving while under the influence of liquor, Barker for drunk and disorderly—and conveyed to Waukegan County Jail. They were arraigned in Dexter, where they pled not guilty to the charges. Bond was set at \$100, which neither could post. Their pre-trial examination is set for Jan. 2 in Chelsea.

## Library Friends...

(Continued from page one)

tion and answer session, will be open to the public.

More than \$1,100 was raised by the 1973 Friends of Library, enabling the library board to completely refurbish the second floor meeting room. Members and friends will have an opportunity to see the room—plus other improvements—at the spring 1974 house tour planned by the Friends.

## REAL ESTATE ADVICE

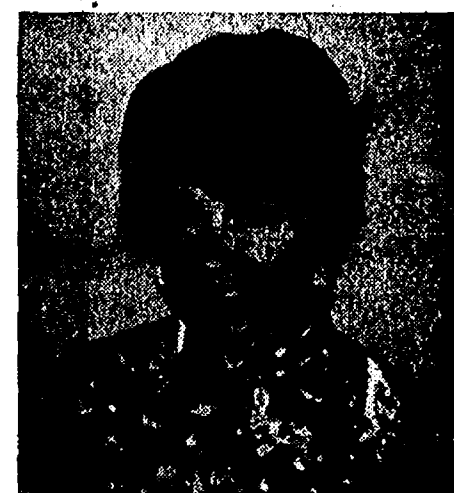
RESIDENTIAL PROPERTIES  
COMMERCIAL - INDUSTRIAL  
FARMS  
VACANT LANDS

## SPEAR & ASSOCIATES, INC.

REALTORS

122 W. Main, Manchester

Ph. 428-8388



MARIA LEHR

428-8182

# SPECIAL SALE

## MEN'S DRESS SHOES 20% Off

This is our regular stock  
on the Main Floor.

FRIDAY & SATURDAY ONLY  
NOV. 23 - 24

Does not include  
work shoes or work boots.

# DANCER'S

Chelsea's Friendly Dept. Store

# Jiffy market

Big Enough To

Serve You . . . Small Enough To Know You!

## Thanksgiving

So Many  
Reasons for  
Thanksgiving...



Neighbors, friends, a bright future . . . There's so much to be proud of as citizens of this community. We are grateful to all our patrons and wish you a "rich-in-togetherness" holiday.



Your friends and neighbors  
of JIFFY MARKET

### Full Line Supermarket

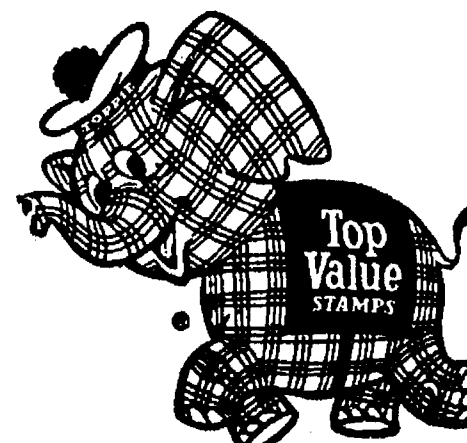
BEER - WINE - LIQUOR

LOTTERY TICKETS

MARATHON GAS PUMPS

2-CYCO GAS PUMPS

AUTHORIZED FOOD STAMP STORE



Open 7 Days A Week

7 a.m. to 10 p.m.

Corner Sibley & Werkner Rds.  
PHONE 475-1701

Sale Prices Effective  
Fri., Nov. 23 thru Sun., Nov. 25, 1973

U.S.D.A.  
GRADE  
CHOICE



## ROUND STEAK

Whole . . . . . lb. \$1.29

Top . . . . . lb. \$1.39

Cube Steak . . . lb. \$1.39

Rump Roast . . . lb. \$1.39

BY WONDER BREAD  
COUNTY FAIR BREAD .2 1 1/4-Lb. Loaves 49¢

RISDON'S  
LO-FAT MILK . . . . . Gal. 98¢

ALL BRANDS, SIZES  
CIGARETTES . . . . . Carton \$3.39

LAND O' LAKES  
BUTTER . . . . . 1-Lb. Carton 89¢

CAMELOT FRESH  
ORANGE JUICE . . . . . 1/2-Gal. 59¢

75th ANNIVERSARY  
PEPSI-COLA . . . . . 8 12-Oz. Cans 98¢

Open All Day Thanksgiving Day, 7 a.m. to 10 p.m. THESE SPECIALS  
FRI. - SAT. - SUN.





CHATHAM HIGH SCHOOL AT LEFT: Kim Schaefer, left, and Mary Beth Schaefer, two former Chatham High School members, are now part of the Chatham (West) College Marching Band. The girls were part of a special band number featured at the last football game of the season with Hope College. The band, under the direction of Dr. David McVey, performed for all pre-game and halftime football ceremonies. Kim is the daughter of Mr. and Mrs. Robert Schaefer of 1215 Pierce St.; Mary Beth is the daughter of Mr. and Mrs. John Dethlefs, 316 Pierce St.

Want to sell a car? Try a Standard Want Ad!



## Cause for Giving Thanks

Thanks be for milk . . . so good so many ways . . . at Thanksgiving or any time. Young and old alike enjoy its delicious goodness!

Serve milk at your Thanksgiving feast. Plain or chocolate, it's refreshing, delicious and chock-full of food values. Use it to enrich your cooking, too.

### Hickory Ridge Farm Dairy

(Successor to Weinberg Dairy)  
Stockbridge, Mich. Phone (517) 851-3000

Tell People You Read It in The Standard!



Are you gambling with your family's security?

Suppose you were sued for \$500,000 . . . and lost! Would you be able to stay out of bankruptcy? And what would happen to your family security? Suits involving hundreds of thousands of dollars are all too frequently started against businessmen and professionals simply because they are well-known as affluent and successful people! Here's an economical way to avoid such a risk! Our Executive Liability Insurance provides up to \$5,000,000 of protection for you and your family. Call us now. We can probably put all your liability insurance together and even save you some money.

it's better  
**altogether**

**A. D. MAYER AGENCY, INC.**

115 PARK ST., CHELSEA  
BOB BARLOW, AGENT  
PHONE 475-2030

**Auto-Owners Insurance**  
Like Home Car Business

## + Services in Our Churches +

**ST. PAUL  
UNITED CHURCH OF CHRIST**  
The Rev. Warner Siebert, Pastor  
Saturday, Nov. 24—  
No further high confirmation.  
Sunday, Nov. 25—  
9:00 a.m.—Church school, re-  
memorial  
10:00 a.m.—Chancel choir re-  
memorial  
11:00 a.m.—Guest speaker. Thank-offer-  
ing in gathering. Courier articles due.

Wednesday, Nov. 28—  
1:00 p.m.—World Wide.  
3:30 p.m.—Junior Choir.  
6:30 p.m.—Courier mailing com-  
mittee.

7:15 p.m.—High School Choir.  
8:00 p.m.—Bible study.

**ZION LUTHERAN CHURCH**  
Corner of Fletcher, Waters Rds.  
(Rogers Corners)

The Rev. John R. Morris, Pastor  
Wednesday, Nov. 21—  
7:30 p.m.—Thanksgiving Eve  
worship. Junior and senior choirs  
singing. Invite a friend.

Saturday, Nov. 24—  
No youth instruction classes.

Sunday, Nov. 25—  
9:00 a.m.—Sunday school.  
10:15 a.m.—Worship.

Monday, Nov. 26—  
7:00 p.m.—Junior Choir.  
8:00 p.m.—Senior Choir.

Wednesday, Nov. 28—  
7:30 p.m.—Sunday school staff.

**ST. THOMAS  
EVANGELICAL LUTHERAN**  
Ellsworth and Haab Rds.

The Rev. Daniel L. Mattson, Pastor  
Thursday, Nov. 22—  
10:00 a.m.—Thanksgiving service  
Sunday, Nov. 25—  
10:00 a.m.—Worship service.  
11:00 a.m.—Sunday school and  
voter's assembly.  
1:00 a.m.—Bible study.

**NORTH SHARON  
BIBLE CHURCH**  
Sylvan and Washburne Rds.

The Rev. William Enslin, Pastor  
Every Sunday—  
10:00 a.m.—Sunday school.  
(Nursery will be available.) Junior  
church classes.  
11:00 a.m.—Worship service.  
8:00 p.m.—Senior High Youth  
meeting. Youth Choir.  
7:00 p.m.—Evening worship serv-  
ices. (Nursery available.)  
Every Wednesday—  
7:00 p.m.—Bible study and pray-  
er meeting. (Nursery available.)  
Bus transportation available: 428-  
7222.

**NORTH LAKE  
UNITED METHODIST CHURCH**  
The Rev. J. William Fodd, Pastor  
Every Sunday—  
9:00 a.m.—Worship service.  
Nursery available.  
10:15 a.m.—Sunday school.  
Every Wednesday—  
4:00 p.m.—Children's Choir.  
7:00 p.m.—Adult Choir.

**SALEM GROVE  
UNITED METHODIST CHURCH**  
3320 Notten Rd.  
The Rev. J. William Todd, Pastor  
Every Sunday—  
10:00 a.m.—Sunday school.  
11:00 a.m.—Worship service.

**BAHA' FIRESE**  
Every Thursday—  
8:00 p.m.—At the home of Toby  
Peterson, 705 S. Main St. Anyone  
wishing to learn about the Baha'i  
faith is welcome.

**ST. JOHN'S EVANGELICAL  
AND REFORMED CHURCH**  
(United Church of Christ)  
Francisco

The Rev. J. P. Goebel,  
Every Sunday—  
9:30 a.m.—Sunday school un-  
til 10:30 a.m. Confirmation class-  
es, seventh graders and up. Chil-  
dren's Choir Practice. Adult Bible  
Study.  
10:30 a.m.—Worship service un-  
til 11:30 a.m. Nursery available  
for pre-schoolers during worship  
service.

**GREGORY BAPTIST CHURCH**  
The Rev. Grant Lapham, Pastor  
Every Sunday—  
10:00 a.m.—Worship.  
10:00 a.m.—Sunday school.  
7:30 p.m.—Evening worship  
service.

**CONGREGATIONAL CHURCH**  
(United Church of Christ)  
The Rev. Carl Schwarm, Pastor  
Sunday, Nov. 25—  
10:00 a.m.—Sunday school.  
11:00 a.m.—Worship service.  
Dedication Sunday—pledges,  
tortest or Memorial Sunday.  
Commentary articles due.

**ST. MARY CATHOLIC CHURCH**  
Pastor  
The Rev. Fr. David Philip Dupuis  
Mass Schedule  
Every Saturday—  
4:00-5:00 p.m.—Confessions.  
7:00 p.m.—Mass.  
Immediately after 7 p.m. Mass—  
Confession.  
Every Sunday—  
Winter schedule  
8:00, 10:00, 12:00 noon.—Mass.  
Summer schedule  
7:00, 9:00, 11:00 a.m.—Mass.

**OUR SAVIOUR LUTHERAN  
CHURCH**  
The Rev. William H. Keller,  
Pastor  
1515 S. Main, Chelsea  
Each Sunday—  
9:00 a.m.—Sunday school.  
9:00 a.m.—Adult Bible class.  
10:30 a.m.—Worship service.  
Wednesday, Nov. 21—  
7:30 p.m.—Thanksgiving service.

**IMMANUEL BIBLE CHURCH**  
145 E. Summit St.  
The Rev. LeRoy Johnson, Pastor  
Every Sunday—  
9:45 a.m.—Sunday school, nur-  
sery provided.  
11:00 a.m.—Morning worship,  
nursery provided.  
Every Wednesday—  
7:30 p.m.—Family hour, prayer  
meeting and Bible study.  
First Sunday of Month—  
7:00 p.m.—Communion service.  
10:00 a.m.—Sunday school.

**FIRST ASSEMBLY OF GOD**  
The Rev. Thode B. Thodeson  
Pastor  
Every Sunday—  
9:45 a.m.—Sunday school.  
11:00 a.m.—Worship service.  
6:00 p.m.—Youth Service.  
7:00 p.m.—Evangelistic service  
Every Wednesday—  
10:00 a.m.—Ladies Bible Study.  
7:00 p.m.—Midweek services.

**VILLAGE UNITED METHODIST  
CHURCH OF WATERLOO**  
8118 Washington St.  
The Rev. Altha Barnes, Pastor  
Every Sunday—  
10:00 a.m.—Sunday school.  
11:15 a.m.—Morning worship.

**FIRST CHURCH OF CHRIST,  
SCIENTIST**  
1883 Washburn Ave., Ann Arbor  
Every Sunday—  
10:30 a.m.—Sunday school;  
morning service.

**WATERLOO  
FIRST UNITED METHODIST**  
Parks and Territorial Rds.  
The Rev. Altha Barnes, Pastor  
Every Sunday—  
9:15 a.m.—Morning worship.

**CHURCH OF CHRIST**  
13661 Old US-12, East  
David A. Rushlow  
Every Sunday—  
10:00 a.m.—Church school.  
11:00 a.m.—Worship service.  
Nursery will be available.  
6:00 p.m.—Worship service.  
Every Wednesday—  
7:30 p.m.—Bible Study.

**BETHEL EVANGELICAL AND  
REFORMED CHURCH**  
(United Church of Christ)  
Freedom Township  
The Rev. Roman A. Reineck  
Every Sunday—  
10:00 a.m.—Worship.

**FIRST UNITED  
PRESBYTERIAN CHURCH**  
Unadilla  
The Rev. T.H. Liang  
Every Sunday—  
9:45 a.m.—Sunday school.  
11:00 a.m.—Worship service.

**LA-Z-BOY**  
RECLINA-ROCKER®  
This chair is destined to be sought after by every member of your family. The generous proportions are enhanced by the burnished dark pine finish of the wood accents. It is fully reclining. It's the rocker that doesn't look like a rocker. La-Z-Boy's exclusive Comfort Selector's three-position leg-rest can be easily adjusted with or without reclining the chair. This gracious styling is certain to add charm and warmth to your home. A selection can be made from hundreds of attractive decorative colors and fabrics, most of them treated with Scotchgard Fabric Protector.

"I used to get my tires at cost . . . 'till the guy went broke."

Our prices are as low as any other station that's still in business!

**MOBIL SERVICE**  
1629 M-52 & I-94  
CHELSEA, MICHIGAN  
Phone 475-1767  
GLENN HEIM  
PROP.

**Mobil-Toons**  
By GLENN  
**GLENN'S**

**LA-Z-BOY**  
RECLINA-ROCKER®

**LA-Z-BOY**  
RECLINA-ROCKER®

**LA-Z-BOY**  
RECLINA-ROCKER®

**LA-Z-BOY**  
RECLINA-ROCKER®

**LA-Z-BOY**  
RECLINA-ROCKER®

**LA-Z-BOY**  
RECLINA-ROCKER®

**LA-Z-BOY**  
RECLINA-ROCKER®

**LA-Z-BOY**  
RECLINA-ROCKER®

**LA-Z-BOY**  
RECLINA-ROCKER®

**LA-Z-BOY**  
RECLINA-ROCKER®

**LA-Z-BOY**  
RECLINA-ROCKER®

**LA-Z-BOY**  
RECLINA-ROCKER®

**LA-Z-BOY**  
RECLINA-ROCKER®

## BIBLE VERSE TO STUDY

"The wise man's eyes are in his head; but the fool walks in darkness."  
1. Who was the author of this verse?  
2. Who was his father and mother?

3. For what architectural masterpiece is he best known?  
4. Where may the above saying be found?

**Bible Verse Answers . . .**  
1. King Solomon.  
2. King David and Queen Bathsheba.  
3. Solomon's temple, at Jerusalem.  
4. Ecclesiastes 2:14a.

**HARMFUL?**  
I've read so much about the harmful effects of air, water and noise pollution that I've decided to give up reading!

**PEANUT BUTTER FACT**  
Peanut butter must contain at least 90 percent peanut butter. It can not have any more than 10 percent of such additives as salt, dextrose and stabilizers.

# SNOW TIRES



**WE'VE GOT  
LOTS OF THEM  
AT  
DISCOUNT  
PRICES**

**Ask About Our FREE  
Replacement Guarantee**

**We Honor ALL These Credit Cards**

**STANDARD OIL  
BANK AMERICARD  
MASTER CHARGE  
AMERICAN EXPRESS  
DINERS CLUB  
CARTE BLANCHE**



The Little Profit saves you more than anything you ever bargained for



The Little Profit saves you more than anything you ever bargained for

# PALMER FORD

61 Years Your Ford Dealer  
Since April 1912

475-1301



## Club, Social Activities

**CHURCH SOCIETY**  
The Chelsea Church Society will hold its annual Christmas dinner on Thursday, Dec. 27, at 7:30 p.m. in the church hall. The menu includes turkey, stuffing, cranberry sauce, and other festive dishes. Tickets are \$5.00 per person. For reservations, call 475-1234.

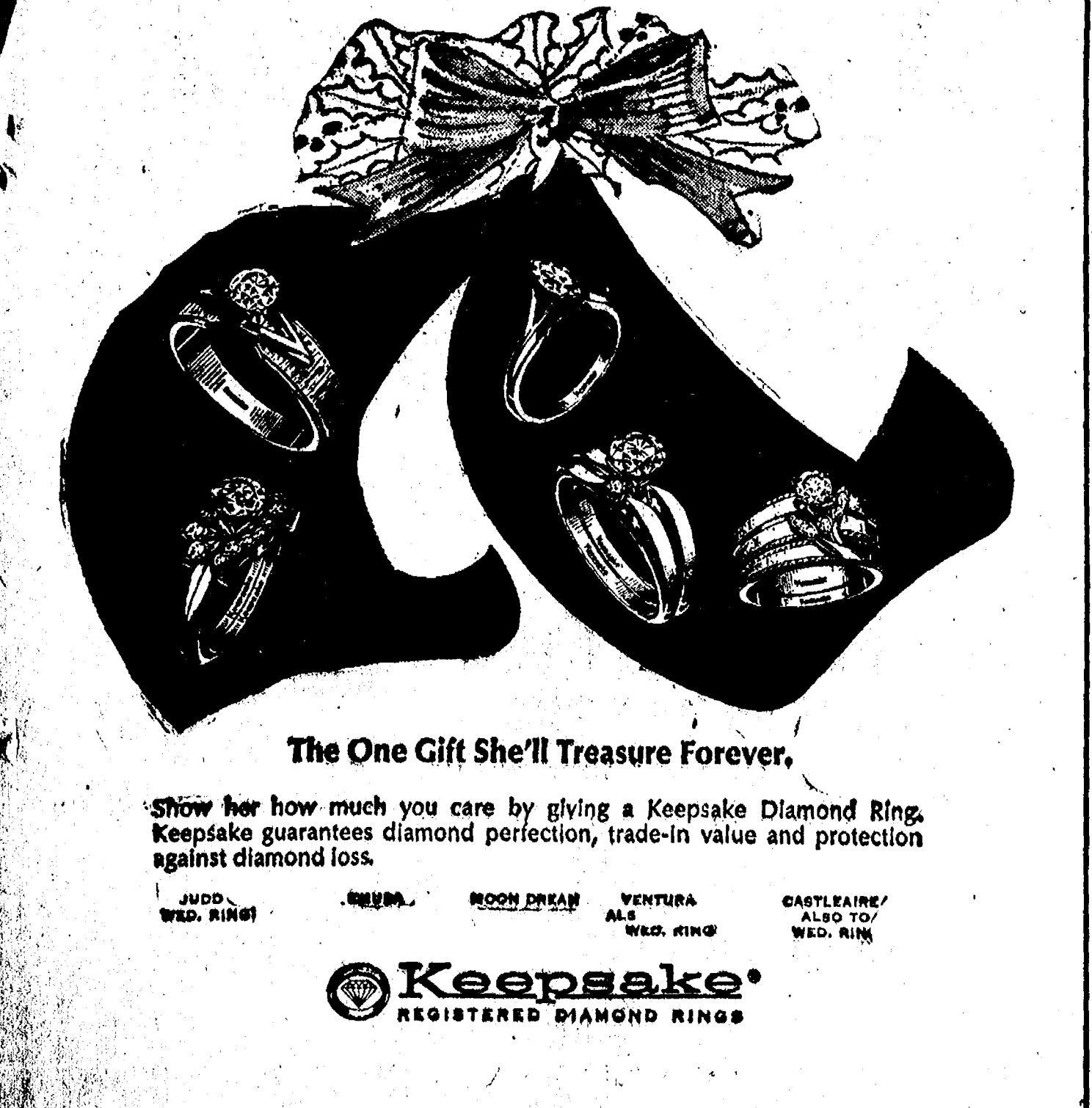
**WOMEN'S CLUB**  
The Chelsea Women's Club will hold its annual Christmas dinner on Thursday, Dec. 27, at 7:30 p.m. in the club hall. The menu includes turkey, stuffing, cranberry sauce, and other festive dishes. Tickets are \$5.00 per person. For reservations, call 475-1234.

**SENIOR CITIZENS**  
The Chelsea Senior Citizens Club will hold its annual Christmas dinner on Thursday, Dec. 27, at 7:30 p.m. in the club hall. The menu includes turkey, stuffing, cranberry sauce, and other festive dishes. Tickets are \$5.00 per person. For reservations, call 475-1234.

**YOUTH CLUB**  
The Chelsea Youth Club will hold its annual Christmas dinner on Thursday, Dec. 27, at 7:30 p.m. in the club hall. The menu includes turkey, stuffing, cranberry sauce, and other festive dishes. Tickets are \$5.00 per person. For reservations, call 475-1234.

**Magic Mirror Beauty Salon**  
Open Tuesday thru Friday 9 a.m. to 9 p.m.  
Saturday, 8 a.m. to 3 p.m.  
PHONE 665-0816

**VILLAGE BEAUTY SALON**  
107 N. MAIN PHONE 475-1671  
LORETTA  
CHERYL - JANICE - CAROL - SUE - ARLENE  
OPEN MONDAY THRU SATURDAY  
Evenings By Appointment



**WINANS JEWELRY**

Show her how much you care by giving a Keepsake Diamond Ring. Keepsake guarantees diamond perfection, trade-in value and protection against diamond loss.

JUDY WED. RING MOON DREAM VENTURA ALA WED. RING CASTLELAINE ALSO TO WED. RING

**Keepsake**  
REGISTERED DIAMOND RINGS

## Gas Company Will Make Rate Refund

Michigan Consolidated Gas Co. announced today that it will make a refund of approximately \$2.7 million to its customers during November.

Hugh C. Daly, president of the utility, said the refund with average about \$125 for customers who heat their homes with gas, and 25 cents for non-heating residential customers. Commercial and industrial customers will also share in the refund. He said the Michigan Public Service Commission has approved the company's proposal to return the money to its customers as a credit on their December bills.

Daly said the refund results from a temporary decrease in the rates of Michigan Wisconsin Pipe Line Co., the utility's principal gas supplier. The pipe line increased its rates Nov. 1, 1972 under rules of the Federal Power Commission which provide for refunding if upon final order, the Commission sets lower rates. Michigan Consolidated passed the higher wholesale costs on to its customers at that time, under refund provisions established by the MPSC.

On July 24 the FCC ordered a slight temporary reduction in the pipe line's rates, going back to Nov. 1, generating the refund. The pipe line reduction enabled Michigan Consolidated to immediately reduce its rates about one-half cent per thousand cubic feet. However, the rates went back up to their previous level on Sept. 1 following an order from the FCC to Michigan Wisconsin to alter its rate schedules.

**HARRY HAFNER** Mr. and Mrs. LeVonne Hafner, 651 Pierce St., announced the engagement of their daughter, Janet Lee, to Lee Hafner, son of Mr. and Mrs. Charles Hafner of 103 Lincoln St. The bride-to-be is a junior at Chelsea High School; her fiancé is employed at Chelsea Restaurant and Thompson's Pizza. A June wedding is planned.

**BIBLE VERSE TO STUDY**

"Give, and it shall be given unto you: good measure, pressed down, and shaken together, and running over, shall men give into your bosom."

1. Who spoke the above words?  
2. At what time?  
3. To whom were they given?  
4. Luke 6:38a.

The best way to get your share of the wealth is to work hard for it.

**4-H Clubs**

**TERRIFIC TAILORS—**  
The meeting of Terrific Tailors 4-H Club was held Oct. 27 at Lima Township Hall.

The meeting was called to order by president Diane Luck. Roll was taken, fourteen members, two leaders, two mothers, and two guests were present. Minutes were read from the last meeting. Next meeting will be Nov. 17.

There was no treasurer's report given.

For new business, our club was asked to the Adrian Mail to sing. For old business, a discussion was held on awards night, Oct. 18.

Winners for our club were Sue Heller and Mrs. Hughes. Our club also won the banner award that night.

New officers were elected. They are president, Sue Heller; vice-president, Cheryl Bareis; secretary, Diane Luck; treasurer, Eileen Staphis; and historian, Angie Merkel.

Refreshments were served by the leaders, Mrs. Hughes and Mrs. Luck.

Sue Heller, secretary.

**ONE WOMAN TO ANOTHER:**  
"Mabel, there's something I just must tell you about Grace Watson—before I find out it isn't true."



## Howard Holmes Named to Head Hospital Building Fund Drive

President Robben Fleming of the University of Michigan has accepted the role of honorary chairman for the building campaign at St. Joseph Mercy Hospital in Ann Arbor. Announced by Sister Mary Yvonne, executive director of the hospital, the official campaign chairmanship will be filled by Howard Holmes, chief executive of Chelsea Milling Co. and long-time participant in St. Joseph's community programs.

"It gives me tremendous satisfaction to welcome President Fleming as St. Joseph's honorary campaign chairman," Holmes said. "This distinguished action by one of the most respected men in the state is a measure of the commitment we all feel toward St. Joseph's future in the community."

Asked to comment, President Fleming responded, "St. Joseph's is everybody's hospital, made so by the co-operative participation of all members of the Ann Arbor community — individuals and groups alike. To my knowledge this is the first time in modern history that this community has been asked to undertake a fund raising effort for its community hospital. We now are privileged to participate in this, a major program of continuing improved health care service undertaken by St. Joseph Mercy Hospital and our total community."

Holmes indicated that the campaign would gain momentum during the next few weeks, launching into a public fund drive in 1974. "Mr. Fleming and I are looking forward to this once-in-a-lifetime opportunity to develop a new exciting new hospital," Holmes said. "St. Joseph has expanded several times on its present 11-acre Ingalls St. location during the past 60 years. There is very little space left at the present hospital, but this development by the Sisters of Mercy on Huron River Dr. will open up countless possibilities. With St. Joseph's lead, we believe this area will become a comprehensive health care center suited to the community's needs for the next half century."

**AUTOMATION:**  
Man's continuing effort to make work so easy that women will some day be able to do it all.

In the last 51 years, the number of farmers, families and hired hands living on American farms has dropped from 32 million to just under 10 million. Today only 1 out of 21 Americans is on a farm. At the same time, the 6.5 million farms averaging 147 acres in 1929 have been combined into 2.7 million averaging 389 acres.

Subscribe today to The Standard!

**JET SPRAY CARPET CLEANING**  
Holiday Special Rates Still in Effect  
Phone John Lixey at 761-3025 or 475-1509

**Looking for the OLD FASHION CHRISTMAS SPIRIT ... Shop in Chelsea!**

**DECEMBER 1973**

SUN.	MON.	TUES.	WED.	THURS.	FRI.	SAT.
					30	1
2	3	4	5	6	7 TIL 9	8
9	10	11	12	13	14 TIL 9	15
16	17 TIL 9	18 TIL 9	19 TIL 9	20 TIL 9	21 TIL 9	22 TIL 9
23	24 AT 6	25	26	27	28	29
30	31	Friendly, Courteous Service By Clerks Who Want To Help You				

**Friendly Personnel**  
★ **FREE GIFT WRAPPING** (in most stores)  
★ **Christmas Carol Playing in the Streets**  
★ **AMPLE PARKING**  
★ **NO WAITING IN LINES**

**Santa Will Meet Us on Nov. 23 Dec. 1 Dec. 8 Dec. 15 from 1 to 3 p.m. at 116 N. Main**  
★ **FREE CANDY for KIDDIES**  
★ **Photographer To Take Pictures If Desired**

Earth's total water supply—held in oceans, seas, lakes, rivers, underground water, ice, and clouds—is 329,000,000 cubic miles.

Copper can be rolled into sheets less than 1/500th of an inch thick.

**COME SEE OUR NEW STORE**  
**Free Coffee and Doughnuts Served on Nov. 30th**  
★ **See Demonstration on how to make LATCH HOOKED RUG**  
By Spinnerman Salesman  
★ **SPECIAL SALE** (NOV. 30 ONLY)  
**1/2 OFF ON ALL RUG PATTERNS RUG KITS**  
Reg. \$12.00  
**SALE - \$9.98**  
Reg. \$8.00  
**SALE - \$6.98**  
★ **Many Colors of RUG WOOL** Reg. 65c  
**SALE - 39c**  
They make great Christmas gifts for that hard-to-buy-for person on your list.  
Special Nov. 30th only  
See you then ...

**Tailfeather Creations**  
103 N Main, Chelsea Phone 475-2512





## Community Calendar

Chelsea Child Study Club Make and Bake Christmas Sale, Dec. 1, from 9 a.m. to 4 p.m., at the Masonic Temple on W. Middle St.

Chelsea Child Study Club Make and Bake Christmas Sale, Dec. 1, from 9 a.m. to 4 p.m., at the Masonic Temple on W. Middle St.

Chelsea Child Study Club Make and Bake Christmas Sale, Dec. 1, from 9 a.m. to 4 p.m., at the Masonic Temple on W. Middle St.

Chelsea Child Study Club Make and Bake Christmas Sale, Dec. 1, from 9 a.m. to 4 p.m., at the Masonic Temple on W. Middle St.

Chelsea Child Study Club Make and Bake Christmas Sale, Dec. 1, from 9 a.m. to 4 p.m., at the Masonic Temple on W. Middle St.

Chelsea Child Study Club Make and Bake Christmas Sale, Dec. 1, from 9 a.m. to 4 p.m., at the Masonic Temple on W. Middle St.

Chelsea Child Study Club Make and Bake Christmas Sale, Dec. 1, from 9 a.m. to 4 p.m., at the Masonic Temple on W. Middle St.

Chelsea Child Study Club Make and Bake Christmas Sale, Dec. 1, from 9 a.m. to 4 p.m., at the Masonic Temple on W. Middle St.

Chelsea Child Study Club Make and Bake Christmas Sale, Dec. 1, from 9 a.m. to 4 p.m., at the Masonic Temple on W. Middle St.

Chelsea Child Study Club Make and Bake Christmas Sale, Dec. 1, from 9 a.m. to 4 p.m., at the Masonic Temple on W. Middle St.

Chelsea Child Study Club Make and Bake Christmas Sale, Dec. 1, from 9 a.m. to 4 p.m., at the Masonic Temple on W. Middle St.

Chelsea Child Study Club Make and Bake Christmas Sale, Dec. 1, from 9 a.m. to 4 p.m., at the Masonic Temple on W. Middle St.

Chelsea Child Study Club Make and Bake Christmas Sale, Dec. 1, from 9 a.m. to 4 p.m., at the Masonic Temple on W. Middle St.

Chelsea Child Study Club Make and Bake Christmas Sale, Dec. 1, from 9 a.m. to 4 p.m., at the Masonic Temple on W. Middle St.

Chelsea Child Study Club Make and Bake Christmas Sale, Dec. 1, from 9 a.m. to 4 p.m., at the Masonic Temple on W. Middle St.

Chelsea Child Study Club Make and Bake Christmas Sale, Dec. 1, from 9 a.m. to 4 p.m., at the Masonic Temple on W. Middle St.

Chelsea Child Study Club Make and Bake Christmas Sale, Dec. 1, from 9 a.m. to 4 p.m., at the Masonic Temple on W. Middle St.

Chelsea Child Study Club Make and Bake Christmas Sale, Dec. 1, from 9 a.m. to 4 p.m., at the Masonic Temple on W. Middle St.

Chelsea Child Study Club Make and Bake Christmas Sale, Dec. 1, from 9 a.m. to 4 p.m., at the Masonic Temple on W. Middle St.

Chelsea Child Study Club Make and Bake Christmas Sale, Dec. 1, from 9 a.m. to 4 p.m., at the Masonic Temple on W. Middle St.

Chelsea Child Study Club Make and Bake Christmas Sale, Dec. 1, from 9 a.m. to 4 p.m., at the Masonic Temple on W. Middle St.

Chelsea Child Study Club Make and Bake Christmas Sale, Dec. 1, from 9 a.m. to 4 p.m., at the Masonic Temple on W. Middle St.

Chelsea Child Study Club Make and Bake Christmas Sale, Dec. 1, from 9 a.m. to 4 p.m., at the Masonic Temple on W. Middle St.

Chelsea Child Study Club Make and Bake Christmas Sale, Dec. 1, from 9 a.m. to 4 p.m., at the Masonic Temple on W. Middle St.

Chelsea Child Study Club Make and Bake Christmas Sale, Dec. 1, from 9 a.m. to 4 p.m., at the Masonic Temple on W. Middle St.

Chelsea Child Study Club Make and Bake Christmas Sale, Dec. 1, from 9 a.m. to 4 p.m., at the Masonic Temple on W. Middle St.

Chelsea Child Study Club Make and Bake Christmas Sale, Dec. 1, from 9 a.m. to 4 p.m., at the Masonic Temple on W. Middle St.

Chelsea Child Study Club Make and Bake Christmas Sale, Dec. 1, from 9 a.m. to 4 p.m., at the Masonic Temple on W. Middle St.

Chelsea Child Study Club Make and Bake Christmas Sale, Dec. 1, from 9 a.m. to 4 p.m., at the Masonic Temple on W. Middle St.

Chelsea Child Study Club Make and Bake Christmas Sale, Dec. 1, from 9 a.m. to 4 p.m., at the Masonic Temple on W. Middle St.

Chelsea Child Study Club Make and Bake Christmas Sale, Dec. 1, from 9 a.m. to 4 p.m., at the Masonic Temple on W. Middle St.

Chelsea Child Study Club Make and Bake Christmas Sale, Dec. 1, from 9 a.m. to 4 p.m., at the Masonic Temple on W. Middle St.

Chelsea Child Study Club Make and Bake Christmas Sale, Dec. 1, from 9 a.m. to 4 p.m., at the Masonic Temple on W. Middle St.

Chelsea Child Study Club Make and Bake Christmas Sale, Dec. 1, from 9 a.m. to 4 p.m., at the Masonic Temple on W. Middle St.

Chelsea Child Study Club Make and Bake Christmas Sale, Dec. 1, from 9 a.m. to 4 p.m., at the Masonic Temple on W. Middle St.

Chelsea Child Study Club Make and Bake Christmas Sale, Dec. 1, from 9 a.m. to 4 p.m., at the Masonic Temple on W. Middle St.

Chelsea Child Study Club Make and Bake Christmas Sale, Dec. 1, from 9 a.m. to 4 p.m., at the Masonic Temple on W. Middle St.

Chelsea Child Study Club Make and Bake Christmas Sale, Dec. 1, from 9 a.m. to 4 p.m., at the Masonic Temple on W. Middle St.

Chelsea Child Study Club Make and Bake Christmas Sale, Dec. 1, from 9 a.m. to 4 p.m., at the Masonic Temple on W. Middle St.

Chelsea Child Study Club Make and Bake Christmas Sale, Dec. 1, from 9 a.m. to 4 p.m., at the Masonic Temple on W. Middle St.

Chelsea Child Study Club Make and Bake Christmas Sale, Dec. 1, from 9 a.m. to 4 p.m., at the Masonic Temple on W. Middle St.

Chelsea Child Study Club Make and Bake Christmas Sale, Dec. 1, from 9 a.m. to 4 p.m., at the Masonic Temple on W. Middle St.

## DEATHS

### Mrs. W. Rademacher Dies at Nursing Home Following Long Illness

Mrs. William (Nancy) Rademacher, 84, formerly of 421 Garfield St., died Saturday, Nov. 17, at Green Meadows convalescent home in Stockbridge after a long illness.

She was born Aug. 8, 1886, in Hancock, the daughter of John and Ellen Carney. She married William Rademacher on Jan. 19, 1919. He died Feb. 26, 1938. The Rademachers came to Chelsea in 1935 from Detroit, and Mrs. Rademacher worked at Federal Screw Works from 1937 until her retirement in 1958.

She was a member of St. Mary Catholic church and the Altar Society of the church. She was also a member of the Legion Auxiliary and the Woman's Relief Corps.

She is survived by two sons, William Rademacher of Chelsea, and Thomas Rademacher of Clarkston; eight grandchildren, one sister, Miss Alice Carney of Hancock, and one brother, Will Carney of Hancock.

Three brothers and three sisters preceded her in death.

Funeral services were conducted Tuesday, Nov. 20, at 11 a.m. at St. Mary Catholic church by the Rev. Fr. Philip Dupuis. Burial followed in Mt. Olivet cemetery. The rosary was recited Nov. 19 at 7 p.m. at Staffan Funeral Home.

### Mrs. Lloyd Collins Former Chelsea Resident Dies at Jackson Hospital

Mrs. Lloyd (Vera) H. Collins, of 3010 Hillside Dr., Ypsilanti, died suddenly Saturday, Nov. 17, at Foote Hospital in Jackson. She was a former resident of 319 Madison St.

She was born Nov. 17, 1903, the daughter of Michael and Martha Custer. She married Lloyd J. Collins Sept. 6, 1922. He died Feb. 27, 1970. The couple lived all of their married life in Chelsea. Mrs. Collins was a member of the First United Methodist church.

She is survived by two sons, Nathan and Edwin, both of Chelsea; three daughters, Mrs. Richard (Ruth) Dawson of Midland, Tex.; Mrs. Maurodis (Margaret) Anton of Michigan Center, and Mrs. Dennis (Barbara) Moffat of Ypsilanti; 14 grandchildren and two great-grandchildren.

One son, Lloyd, preceded her in death on March 2, 1968. Three sisters and one brother also preceded her in death.

Funeral services were conducted Tuesday, Nov. 20, at 2 p.m. at Staffan Funeral Home by the Rev. Clive Dickins. Burial followed in Oak Grove cemetery.

### Ulysses G. Higgins Chelsea Man's Brother Dies Saturday in Bay City

Ulysses Grant Higgins, 5017 Pressler Ct., Bay City, died Saturday, Nov. 17, in Bay City after an illness. He was 31.

Born Aug. 9, 1942, he was married to Laurel Harrison of Bay City in 1961. He was employed by the General Motors Corp. of Bay City as a pipefitter.

He is survived by his widow; three daughters, Rachel, Jennifer and Ashley; three brothers, Joseph, Jr., of Dansville, Paul of Chelsea, and Daniel of Stockbridge; a sister, Mary Lou Preston of Ann Arbor; and his father, Joseph, Sr., of Stockbridge.

Funeral services are conducted Tuesday, Nov. 20 at 2 p.m. at Squires Funeral Home in Bay City. Burial followed in Oakridge cemetery.

The Veterans Administration cautions veterans to check on availability of benefits before traveling or establishing residence abroad.



**FIRST BUCK KILLED** in firearms deer season, at least the first one reported to The Standard, was the proud possession of Everett Johnston of Gregory, who bagged this eight-point buck at 7:15 a.m. last Thursday, the opening day of the season. Area conservation officer Bob Like, however, reports that the kill thus far has been extremely small—he reports only having seen "at the most half a dozen killed." Predictions for this season were that it would be the best in five years.

## Postal Service Advances Mail Deadlines

Postmaster Richard Schaules today joined Postmaster General E. T. Kiasen in urging the residents of Chelsea to post their domestic and foreign Christmas mail one to two weeks earlier than the Postal Service originally recommended, so that the every short-energy crisis compels us to request a one-week advancement of suggested dates we gave for domestic mail and a two-week advancement for foreign mail," Postmaster Schaules said.

The new deadline for posting domestic first-class Christmas mail is Dec. 8 rather than Dec. 15, as previously announced. Domestic surface parcels, except those for Alaska and Hawaii, should be mailed by Dec. 3, instead of Dec. 10. To Alaska and Hawaii, mail by Nov. 23 instead of Nov. 30.

Airmail parcels and letters within the United States (except Alaska and Hawaii) should be posted no later than Dec. 15, rather than Dec. 21. To Alaska and Hawaii, mail by Dec. 13, rather than Dec. 20.

"The seriousness of the fuel shortage to the Postal Service is underlined," Postmaster Schaules said, "by the fact that in addition to the fuel consumed by commercial air carriers, we require approximately 350 million gallons of fuel to travel 2.25 billion miles delivering the 90 billion pieces of mail that flow through the system each year. Our requirement for the month of December alone is 45 million gallons."

Postmaster Schaules said that "public co-operation on meeting these new, advance mail early dates is needed to help us complete all Christmas deliveries."

**THE RIGHT DEFINITION?** Genius is one percent inspiration and 99 percent perspiration.

## Lima Township Board Okays Printing of Historic Study Book

Lima Township Board meeting was held Tuesday, Nov. 13, in Lima Township Hall.

Approved at the meeting was the printing of an historic study booklet, called "Living in Lima," which is to be used as a guide for building and modification in the township, in order that such changes might coincide with the rural qualities inherent in the township. The booklet is also expected to aid in site planning.

The Township Board simultaneously received a \$200 contribution from Gordon Sutton to boost funds available for printing of the booklet over the target amount.

Although only 100 copies will initially be printed, masters will be preserved for future printings of the booklet.

Retaining the services of Allen Dines on a full- or part-time basis, whichever is necessary, for the month of December, was approved. The grant which pays Dines' salary expires at the end of this month, and the board felt it necessary that he continue his work on zoning on at least a part-time hourly basis until he is able to "tie up some loose ends."

Discussion on the tax equalization plan was conducted, although there was no resolution. The township is working with other townships regarding this matter and has paid dues to the County Township Supervisors Association.

A new trailer permit renewal policy, recognizing that some trailer owners have not renewed their permits, was approved. The policy will include a new system of fee and reminder letter.

To rectify a problem in the township with zoning violations, the board approved the taking of court action by the township.

Next meeting will be the regularly-scheduled first Monday of the month, Dec. 3, in Lima Township Hall.

**Corn Harvest...** (Continued from page one) els is all we can process in a day.

"Our big problem now, of course, is with shipping," he continues, "Penn Central—well, everyone knows Penn Central's problems—they just don't have the cars. We get to a certain point and we just can't move the stuff."

But he says it with almost a glimmer of relief at having too much, instead of too little.

**DRILLING & SERVICE** The Marine Corps has joined the Army in testing a reduced drill requirement for reservists in an effort to encourage enlistments.

## Child Study Club Plans Christmas Make & Bake Sale

All home-made items will be featured at the Chelsea Child Study Club's Make and Bake Christmas Sale on Dec. 1, from 9 a.m. to 4 p.m., at the Masonic Temple on W. Middle St.

Among the items to be sold are baked goods, cornhusk dolls, needlework, macramé, Christmas ornaments, wall hangings, pine cone wreaths, pajama bags, nut wreaths, and candles.

In addition, Steve Cole will be doing charcoal sketches in person, or from pictures of individuals or animals. Interested persons should call 475-2831 for an appointment.

Members invite the community to come and browse through their displays and enjoy a free cup of coffee. Proceeds are donated to the Home Meal Service and St. Louis school.

## Drain Commission Proposes County-Wide Lakes Association

Washtenaw County Drain Commission announced Tuesday that it has proposed the establishment of a county-wide organization of lake associations.

The organization would work to co-ordinate and aid the efforts of lake associations, governmental agencies, and individuals in dealing with problems found in the lake communities of Washtenaw county.

The Drain Commission will sponsor a meeting at 7:30 p.m. on Monday, Nov. 26, in room 117 A of the County Building, Ann Arbor. All lake associations, as well as interested individuals, are encouraged to attend.

If you want to live longer, remember the "eat" in death.

## Discussion Set On Property Tax Relief

A discussion of the state amendment which gives property tax relief to veterans drawing compensation or pension and to senior citizens will be held at the Korner House on Tuesday, Nov. 27, at 7:30 p.m.

The discussion is under the joint sponsorship of Chelsea American Legion No. 31 and Veterans of Foreign Wars No. 4076.

For veterans, tax relief depends on the percentage of compensation and the state equalized value of property. There is no limitation of the state equalized value.

For senior citizens, there is no income limitation. The amendment also enables a veteran or senior citizen to obtain a tax refund or credit if he is renting.

Applications for tax relief will be available at this session. Participating in the discussion will be the staff from the Washtenaw County Veteran's Affairs Office, 4133 Washtenaw Rd., Ann Arbor. Kelly G. Carpenter of Chelsea will be the moderator.

The meeting will be open to the public.

## Stolen Car Recovered Here Saturday Morning

When a car parked in Robert Shepherd's yard on Old US-12 last Saturday morning, he figured it belonged to some deer hunter and didn't report it.

Later in the day, however, he changed his mind and called Chelsea police. After checking with the Washtenaw County Sheriff's Department, they discovered that the 1964 two-door black Chevrolet had been reported stolen in Jackson. The Department is holding the vehicle to be checked for prints.

**WE WILL BE CLOSED**  
**THANKSGIVING DAY, THURS. NOV. 22**  
**AND REMAIN CLOSED UNTIL NOV. 26**  
**RE-OPEN MONDAY,**  
**Nov. 26, at 5:30 a.m.**

Come in and try our meals.  
 Where food is good and service unexcelled.

**OPEN DAILY**  
**EXCEPT SUNDAY**  
**5:30 am to 7 pm**

**CHELSEA RESTAURANT**

Ella - Noel - Ruth - Dorothy - Olla  
 Hattie - Kay - Kim - Lee - Lenard

**GO**

**GAMBLES**

**SAVE Up to 55%**  
**On Christmas Gifts**

**TOYS**

**CHAIRS**

**APPLIANCES**

**TOOLS**

**TV**

**STEREO**

**BIKES**

**WATCHES**

**LAY AWAY NOW & SAVE!**

**JACKETS**

**JACKETS**

**JACKETS**

**AUTHENTIC**  
**SKI JACKET**  
 Navy with Red-White Trim

**PENDLETON**  
 100% Wool  
**SHIRT-JACS**

**Air Force Snorkel**  
**Arctic Parka**  
 WITH HOOD

**CAR COATS**  
 Wool or  
 Tan Poplin

**"CHELSEA"**  
**Varsity Jacket**  
 Boys & Men's  
 Sizes

REMEMBER - THIS YEAR - SHOP EARLY FOR CHRISTMAS

**Strieter's Men's Wear**  
*"The Place To Go for Brands You Know"*

**DO-IT-YOURSELF**

**CERAMIC TILE**

**Now in Stock at Chelsea Lumber**

★ **WALL TILE**  
**4 1/4" x 4 1/4" SELF-SPACING**  
 Spread special adhesive on any sound wall surface, place self-spacing tile, then grout joints — for an easy-to-clean wall of enduring beauty. From

**59¢**  
 Sq. Ft.

★ **FLOOR TILE**  
**1" x 1" TILE ON MESH SHEETS**  
 Spread mastic on sound floor surface, place 12 5/8" x 12 5/8" sheets, then grout.

**79¢**  
 Sq. Ft.

**NO SPECIAL TOOLS NEEDED**  
**NO CHARGE FOR USE OF TILE CUTTER.**

**CHELSEA LUMBER CO.**  
 DIAL GR 5-3391





**1101 M-52, Chelsea**  
Center of M-52 and Old US-12  
**OPEN: 8 to 10 Daily**  
**8 to 7 Sunday**

**THE PRICE BUSTERS** **WE ARE THE SERVICE PEOPLE**

# PORK-A-PLENTY-SALE

**WHOLE PORK LOINS**

**89¢** lb.

12 to 14 lb. Avg.  
SLICED FREE

**VALUABLE COUPON**  
**PILLSBURY FLOUR**  
5 lbs. 59¢  
SAVE 30¢ WITH COUPON  
LIMIT 1 EXPIRES NOV. 25, 1973

**VALUABLE COUPON**  
**POLLY'S HOMO MILK**  
2 Cans. 99¢  
SAVE 19¢ WITH COUPON  
LIMIT 2 EXPIRES NOV. 25, 1973

**VALUABLE COUPON**  
**SWIFT BUTTER**  
1 Lb. 69¢  
SAVE 30¢ WITH COUPON  
LIMIT 1 EXPIRES NOV. 25, 1973

**VALUABLE COUPON**  
**MAXWELL HOUSE INSTANT COFFEE**  
10-Oz. 99¢  
SAVE 70¢ WITH COUPON  
LIMIT 1 EXPIRES NOV. 25, 1973

**VALUABLE COUPON**  
**GALA JUMBO TOWELS**  
3 rolls 89¢  
SAVE 30¢ WITH COUPON  
LIMIT 3 EXPIRES NOV. 25, 1973

**VALUABLE COUPON**  
**MRS. FILBERT'S MARGARINE**  
Lb. 29¢  
SAVE 13¢ WITH COUPON  
LIMIT 1 EXPIRES NOV. 25, 1973

**VALUABLE COUPON**  
**10-OZ. NO-RETURN BOTTLES PEPSI**  
8 pak 89¢  
SAVE 28¢ WITH COUPON  
LIMIT 1 EXPIRES NOV. 25, 1973

CENTER CUT	<b>PORK CHOPS</b>	lb.	\$1.19
CENTER CUT	<b>LOIN PORK CHOPS</b>	lb.	\$1.29
LEAN, MEATY COUNTRY STYLE	<b>SPARE RIBS</b>	lb.	99¢
LOIN END	<b>PORK LOIN ROAST</b>	lb.	89¢
POLLY'S OWN	<b>BULK BREAKFAST SAUSAGE</b>	lb.	79¢
FINE FOR BAKING	<b>STUFFED PORK CHOPS</b>	lb.	99¢
LEAN BONELESS	<b>PORK CUTLETS</b>	lb.	\$1.09
LEAN SLICED	<b>FRESH SIDE PORK</b>	lb.	89¢

**Grocery Values You Can't Afford To Miss!**

<b>DEL MONTE CATSUP</b>	14-Oz. Bottle	19¢
<b>CAMPBELL TOMATO SOUP</b>	10.5-Oz. Can	10¢
<b>DEL MONTE FRUIT COCKTAIL</b>	2.5-Oz. Can	39¢
<b>DEL MONTE CORN</b>	16-Oz. Can	19¢
<b>DEL MONTE CUT GREEN BEANS, SWEET PEAS</b>	16-Oz. Can	22¢
<b>SMUCKER GRAPE JELLY</b>	18-Oz. Jar	43¢
<b>FABRIC SOFTENER</b>	1/2 gal.	49¢
<b>KRAFT 1,000 DRESSING</b>	8-Oz. Bottle	29¢
<b>VERNORS REG. or 1 Cal.</b>	28-Oz. Bottle	4 for \$1
<b>OXYDOL DETERGENT</b>	49-Oz. Box	69¢
<b>PRODUCE AT ITS VERY BEST</b>		
<b>HEAD LETTUCE</b>	Head	25¢
<b>TANGERINES</b>	Doz.	59¢
<b>YELLOW ONIONS</b>	3-Lb. Bag	39¢
<b>SQUASH, all varieties</b>	Lb.	8¢
<b>- LAST-MINUTE SPECIALS -</b>		
<b>POTATO CHIPS</b>	14-Oz. Bag	39¢
<b>ICE CREAM</b>	1/2 gal.	69¢
<b>ORANGE JUICE</b>	3 12-Oz. Cans	\$1
<b>HARRIS PUMPKIN PIE</b>	8-INCH	49¢

**SHOP POLLY'S AND SAVE!**

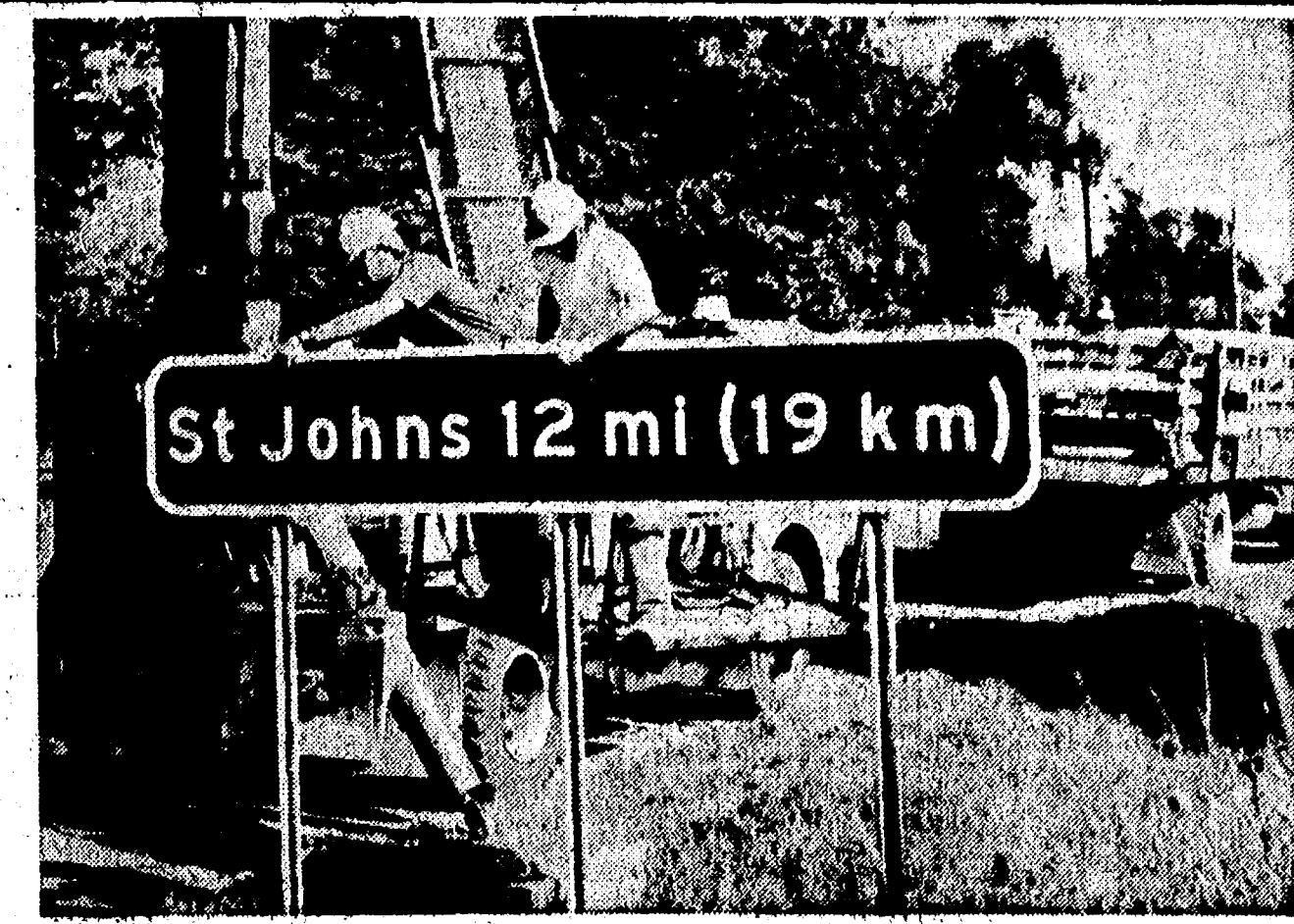
**OPEN 7 DAYS A WEEK**  
**Same-Day Dry Cleaning Service**  
**Imported and Domestic Wines**  
**Cold Beer at Low, Low Prices**  
**Fresh Baked Goods Daily**  
**Carry-Out Service**

Second Section

## The Chelsea Standard

Pages 7-12

CHELSEA, MICHIGAN, THURSDAY, NOVEMBER 22, 1973



**SIGNS OF THE FUTURE** are these new experimental highway signs showing distance in both miles and kilometers. The Department of State Highways is installing them on US-27 between Lansing and Grayling and at selected other sites as an early step in an expected nation-wide conversion to the metric system of measurement over the next 10 years. This sign shows the distance from DeWitt to the Clinton county city of St. Johns.

### Safety Is First Requirement in Child's Footwear

"Slippery-soled shoes may have been the villain behind your child's last scraped knee," says Helen Fairman, extension home economist.

Extension clothing specialists at Michigan State University suggest that parents sniff the bottoms of their child's new shoes to give better traction on smooth floors and reduce tumbles.

"They also caution parents about purchasing platforms, wedged and high heels for children just because they're in fashion," Mrs. Fairman says. These shoes can be dangerous for climbing stairs, driving or just walking.

Shoes are designed to protect and help a child's feet to grow and develop—not just for appearance!

### Breeding Efficiency Headlines MABC Dairy-Beef Seminars

The means and ways to achieve maximum breeding efficiency is the main thrust of the 1973 MABC Dairy-Beef Seminar, according to Kenneth Baushke, Michigan Animal Breeders Co-operative's general manager.

Keynoters for the seven-location event include Dr. Don Hillman, Dr. Roger Millenberger, Dr. Clinton Meadows, all of MSU; Dr. James Lauderdale of Upjohn Co. will speak on the exciting possibilities of heat synchronization through the prostaglandin research. George Miller, Director of Marketing and Development for Select Sires will be on hand for an update on sires available through MABC. Director of MABC Training Programs, Russel Hanson, will relate the success of the straw for improving herd conception. Herd management, nutrition, records, detection aids are pin point areas for discussion.

The afternoon program will be divided by interest groups into dairy and beef sessions. Ken McDonald, Purdue Extension Staff, will tie into herd handling for improved detection and conception. Dr. Harlan Ritchie, MSU, will discuss the timely topic of "Improving the Mothering Ability in the Mature Herd."

This year, MSU Home Extension Service will be sponsoring a special feature for the ladies to coincide with the seminar. The ladies are urged to attend.

Dates and locations are as follows: Dec. 3, State Office Building, Escanaba; Dec. 4, Northwood Inn, Cadillac; Dec. 5, Holiday Inn, Gaylord; Dec. 6, Comet Lanes, Grand Rapids; Dec. 7, American Legion Hall, Frankenmuth; Dec. 10, Holiday Inn, Albion; Dec. 11, Elkhart County Building, Goshen, Ind.

For further information, contact Michigan Animal Breeders Co-operative, Inc., 3655 Forest Rd., East Lansing.

### EARTH & SKY PROBE

Space Center, Houston—Skylab astronauts have probed the earth below and the heavens above with instruments designed to help man learn more about the resources of his own planet and about the boiling surface of the sun.

## LLOYD BRIDGES CHEVROLET USED CAR CORRAL

### Thanksgiving Specials Save, Friday & Saturday

<b>1970 CHEVY PICKUP</b> , V-8, stick, excellent condition <b>\$1395</b>	<b>1967 BUICK LeSABRE</b> , Auto., power steering, power brakes. White with blue interior. <b>\$495</b>
<b>1973 IMPALA 4-DR.</b> Auto., factory air, power steering, power brakes, V-8. This car is loaded. <b>\$3295</b>	<b>1964 IMPALA 4-DR.</b> Auto., power steering, power brakes, 47,000 miles. Excellent condition inside and out. <b>\$1295</b>
<b>1965 CHRYSLER 2-DR.</b> Auto., power steering, power brakes. Excellent condition. <b>\$595</b>	<b>1971 CHEVY PICKUP</b> , Two-tone paint, auto., power steering, V-8, custom deluxe with 45,000 miles. <b>\$2095</b>
<b>1971 IMPALA 2-DR.</b> Auto., power brakes, factory air. Blue with black top. Low mileage. <b>\$1895</b>	<b>1971 CHEVY 1/2-TON.</b> Auto., power steering. Brand new 8-ft. box. Excellent condition. <b>\$1995</b>
<b>1968 DODGE 4-DR.</b> Auto., power steering, power brakes, factory air. Excellent transportation. Low mileage. <b>\$695</b>	<b>1970 BUICK WILDCAT.</b> Auto., power steering, power brakes. <b>\$1495</b>

## LLOYD BRIDGES CHEVROLET

**SALES HOURS:**  
Monday & Thursday 8:00 a.m. - 8:30 p.m.  
Tuesday, Wednesday, Friday, 8:00 a.m. - 6:00 p.m.  
Saturday 8:00 a.m. - 1:00 p.m.

**475-1373**  
CHELSEA, MICH.







## WANT ADS

### Automotive Rust Proofing Cars and Trucks

**Village Motor Sales, Inc.**  
1185 Manchester Rd., Chelsea  
Phone 475-8661  
Hours: 9 a.m. to 5 p.m.  
Tues. thru Fri. 9 a.m. to 5 p.m.  
Sat. 9 a.m. to 1 p.m. Sundays

**BURNEY A. ALLEN**, Insurance Broker  
1185 Manchester Rd., Chelsea  
Phone 475-8661

### CUSTOM PAINTING

Painting - Candy Apple  
Lining - Colorbonding  
Air Brack Work  
Plasma Cut Specialty  
CARS - MOTORCYCLES  
KNOWMOBILES - BOATS  
Complete Fiberglass Repair

**Village Motor Sales, Inc.**  
1185 Manchester Rd., Chelsea  
Phone 475-8661

**JIM'S TAXIDERM** - Game heads, small game, birds, fish, fur rugs with head mounting, hat rugs, novelties. Specializing in taxidermy. 17700 Old US-12, Chelsea. Ph. 475-2906.

**PERSONALIZED Christmas cards** by Hallmark. Chelsea Card & Gift Shop, 118 S. Main. 475-7501.

## USED CARS

### and TRUCKS

### BOUGHT and SOLD

### KETO, INC.

8080 Grand  
DEXTER  
Phone 466-4635

### Personalized Christmas Cards

Select Now and SAVE!

**The Chelsea Standard**

CONVALESCENT HOME in Chelsea has vacancy for ladies. Will give special diets and personal care. Ph. 475-1503.

FOR SALE—1972 Suzuki 250 Savage. Just like new. May be seen at 208 South St., or call 475-7288.

IT'S inexpensive to clean rugs and upholstery with Blue Lustre. Rent electric shampooer, \$1. Dancers.

FOR SALE—Electric guitar, never used. With amplifier. Call 475-7611.

## WANT ADS

### LEHMAN WAHL Land Appraisal Residential and Farm

17001 West Austin Rd.  
Manchester, Mich.  
Area Code 313  
428-8884

### Chelsea Associated Builders

Custom Building and Remodeling.  
Over 20 years experience.  
Call 475-8182.

**CALL FRANK** for all your carpet cleaning jobs, morning or week-end. Needs only 3 hours to dry. Only 10¢ per square foot. Phone now for free estimate, 761-4328. All work guaranteed.

### House in Country

Lovely 3-bedroom ranch, carpet, fireplace, long black-top driveway, large dog kennel on rolling 30 acres. Upper 50's. Contract available.

**Waggoner Real Estate**  
MARY FIALKOWSKI  
428-8334

### Fireplace Builder

Field stone mason, block and brick mason, tuck pointing.  
FREE ESTIMATES  
Call 475-8025 after 3 p.m.

### Patrick Grammatico

AKC Tri-Coile male, 4 mos. old, \$100 or best offer. Ph. Pinckney, 498-2511.

FOR SALE—Carefully used LaBlanc clarinet, \$100. Ph. 475-1290.

CAR & TRUCK LEASING. For details see Lyle Chriswell at Palmer Motor Sales, 475-1301.

### SCHNELL'S REFUSE SERVICE

Still \$3.50 a month.  
Once a week in the winter.  
Twice a week in the summer.  
Call Jackson, Mich.  
(617) 787-0343

### MODERNIZE YOUR HOME

Remolding inside and out.  
AWNINGS - PATIOS  
Basements, under existing homes or new.

Porches, insulation, room additions, siding, bathrooms and kitchens, cement work, roofing.  
Complete line.  
Licensed contractor.

**FREE ESTIMATES**  
**BANK TERMS**

No money down, bank financing.  
(617) 783-6800 Jackson  
or (313) 283-2788, Adrian  
Seven days a week, 24 hours a day.

### Ken McDonough

770 Oak Hill Dr.  
Brooklyn, Mich. 49230

## WANT ADS

### NOW Full Time Complete Body Shop Service

Stop in For An Estimate

### PALMER FORD

224 S. Main St.  
475-1301

### CUSTOM BUILDING

**LICENSED & INSURED**  
**FREE ESTIMATES**

### TOTAL CONSTRUCTION SERVICES

—Residential, commercial and industrial  
—Garages  
—Remodeling - Additions  
—Aluminum Siding  
—Roofing  
—Trenching

### SLOCUM CONTRACTORS & BUILDERS

Serving Washtenaw County  
For Over 30 years  
20706 OLD US-12  
CHELSEA  
Phone 475-8321 or 475-7611

### Pine Haven Saddlery

4634 Dexter Townhall Rd.  
Phone Dexter 426-4268

Complete line of English and Western equipment, 10% discount to all 4-H Club members.

Store Hours: Mon.-Sat., 9-9  
Sunday, 10-9

### NEW and REMODELING Residential Carpenter Contractor

**M. A. LAWRENCE**  
1-517-522-4364

### Siding, Roofing and Gutters

Reasonably priced and Licensed.

### Mills Construction Co.

Call 851-8857  
for free estimates.

### THE LITTLE FLOWER SHOP

3451 Waltrous Rd., Chelsea  
Phone GR 5-8508

We Deliver and Wire  
Flowers, Corsages, Arrangements  
and Plants.

Weddings and Funerals.

**BUILDERS**—House and barn roofing, all types of roof repairs, aluminum storm windows and doors, aluminum siding and gutters, awnings, porch enclosures, garage and room additions, cement work. Call Joe Hayes for free estimates, Manchester 428-8520.

**SHOES FOR REPAIR** picked up and delivered every Monday at Parli's Cleaners, 113 Park St., Chelsea, Mich.

**SEAMLESS ALUMINUM** Eaves-troughs installed and guaranteed. White and colors available. For free estimates, call Rick Klein-schmidt, R. D. Kleinschmidt Co., 428-8888.

**Sand** Gravel

**KLINK EXCAVATING**  
Bulldozer - Backhoe  
Road Work - Basements  
Trucking - Crane Work  
Top Soil - Demolition  
Drainfield - Septic Tank  
Trenching, 5' up

Industrial, Residential, Commercial  
CALL 475-7691

**CHRISTMAS BAZAAR** Saturday, Dec. 1, North Lake United Methodist church, 11 a.m. to 7 p.m. Buffet 5:30 p.m. Lunch, Christmas items, bake sale.

**10 ACRES** wooded parcel, Lewis-ton, Mich. \$5,000, land contract, easy terms. 475-2184.

**FOR SALE**—17 feeder pigs, 2 months old. Inquire at 16100 N. Hwy. 10, Cavanaugh Lake.

## WANT ADS

### Gem Travel Trailers and Campers

### PICK UP COVERS

4' ————— \$100.00  
26' ————— \$179.00 and up

### Triangle Sales

Chelsea 475-4803

**CAR RENTAL** by the day, week-end, week or month. Full insurance coverage, low rates. Call Lyle Chriswell at Palmer Motor Sales, 475-1301.

### Complete Body Repair Service

Bumping - Painting  
Windshield and Side Glass Replacement  
Free Pick-up & Delivery  
Open Monday Until 9  
CONTACT DON KNOLL  
FOR FREE ESTIMATE

### Village Motor Sales, Inc.

IMPERIAL - CHRYSLER  
DODGE - PLYMOUTH  
Phone 475-8661

1185 Manchester Rd., Chelsea  
Hours: 8 a.m. to 6 p.m.  
Tues. thru Fri. Until 9 Monday.  
9 a.m. to 2 p.m. Saturday

**PERSONALIZED Christmas cards** by Hallmark. Chelsea Card & Gift Shop, 118 S. Main. 475-7501.

**REPAIR SERVICE** for household refrigerators, freezers and garbage disposers. Call Bill, 428-8314.

### Headquarters for RED WING WORK SHOES

### Foster's Men's Wear

**FOR REAL DOLLAR SAVINGS** be sure and see us before you buy any new or used car. Palmer Motor Sales, Inc. Your Ford Dealer for over 50 years.

**PERSONALIZED Christmas cards** by Hallmark. Chelsea Card & Gift Shop, 118 S. Main. 475-7501.

**WANTED TO RENT**—House to rent in Chelsea School District. References. Husband is cabinet maker; specialty remodeling. Will repair or remodel as part payment if owner desires. Negotiable. Phone 475-1845.

**HOUSE FOR SALE** in Stockbridge area. 6-room house, on 2½ acres. Full basement, gas heat in Stockbridge area. Call 784-4967 after 8:30 except on week-ends.

**DEPENDABLE TREE SERVICE**—Cutting and removing. Call 426-4110.

**ATTENTION, DEER HUNTERS**—The W. Weaver Co. Tannery of Reading, Mich. is out of business. We are assuming their clientele. Bring your deer skins to us for tanning. Fast service, reasonable prices. Hides must be in by Dec. 15th. We also buy deer hides. See us at the Cheyenne Bonnet Leather Shop, 137 N. Jackson St., Jackson, Mich. 49201.

**FOR SALE**—Long black vinyl couch, coffee table, black and white portable TV with stand. Best offer. Ph. 475-7609.

### DANCE

Sponsored By  
Chelsea Rod & Gun Club  
Saturday, Nov. 24  
9:00 p.m. to 1:30 a.m.

Music By  
LORENZ WACKENHUT COMBO

Snacks - Set-Ups - Ice and Lunch furnished.  
\$7.00 per couple

For tickets and information  
call Gary Bentley or Roger Davis.

**VILLAGE OF GRASS LAKE**, 3-bedroom home, for sale by owner. One bedroom and full bath down; two bedrooms, half bath and storage room up. Living room, dining room, kitchen and breakfast nook carpeted; 4-car garage, paved drive, and large shaded lot. \$31,000. Call 517-522-4459.

**MUNITH AUCTION**—100 Main St., Munith, Mich. Auction every Sunday, 6 p.m. Danny Fleming, auctioneer.

**FOR SALE**—2-wheel trailer with cover, extra wheel and tire. Also two snow tires and wheels. Size 7.75x14. Also one red snow suit with hood, size ex. large, and 1 dark green snow suit, size large. May be seen at 419 Wil-kinson or call 475-1148.

**All Insurance Needs**  
In the convenience of your own home — or mine

**N. H. Miles, Allstate**  
Call GR 5-8884 after 6 p.m.

**BABYSITTING** in my own home. Cavanaugh Lake.

## WANT ADS

**ELECTRICAL WIRING** of all types New and rewiring. Ph. 428-4852.

**EVINGER REAL ESTATE**, Alpine St., Dexter. Phone 428-5316.

**SEE US** for transit mixed concrete. Klump Bros. Gravel Co. Phone Chelsea 475-2530, 4920 Loveland Rd., Grass Lake, Mich. 49041.

**TRAVEL TRAILERS**—18-ft. and up, 10x55 ft. trailers. John R. Jones Trailer Sales, Gregory, Mich. Phone 498-2855.

**WANTED**—Carpentry work, any type. Charles Romine, Ph. 475-7474.

**FOR SALE**—1 acre building sites, Chelsea area. Phone 475-2828.

**STOCKBRIDGE**, 13 acres, commercial, on M-52, (617) 851-8144.

**PIANO TUNING**, Chelsea and area. Facilities for reconditioning and rebuilding. Used piano sales; re-conditioned grands and verticals. E. Eeklund, 426-4429.

### ASPHALT PAVING

Driveways - Parking Areas  
Landscaping - Site Work  
**PREVO EXCAVATING CO.**  
(517) 851-8808 or (313) 463-1027

**FOR SALE**—Indian cents, post-cards, books, foreign coins, Australian opals, and other articles. Lawrence E. Guinan, 1571 Sugar Loaf Lake. Call 475-2317.

### D&G Allen Excavating

Septic Tanks and Drains  
Back Hoe and Dozing  
Sand, Gravel and Topsoil Hauled  
Phone (517) 851-8386  
or (517) 851-8278

**A & K MOWER SERVICE**—All types of small engine repair. Free pick-up and delivery. 475-2923.

**A PIECE OF THE ACTION** is yours if you register by Nov. 16 to vote in Chelsea School District's Building Bond Election Dec. 17.

**CHILD CARE NEEDED** in home, Monday through Friday, 8 a.m. to 5 p.m. to start Jan. 1. Three children. Cavanaugh Lake - Chelsea area. References. Wages negotiable. 475-2931 after 6 p.m.

**FOR RENT**—2-bedroom house. Lots of extras. No pets or children. \$275 month. Ph. 475-7402.

**WOULD LIKE 3 or 4 bedroom unfurnished house for rent or option to buy.** 426-5277, Chelsea, Dexter, or Manchester.

**FOR SALE BY OWNER**—Approx. 2½ acre, beautiful wooded building site with 4 miles of Chelsea. Call 475-8303 after 5 p.m.

**FOR RENT**—Fair Service Center for meetings, parties, wedding receptions, etc. Weekdays or week-ends. Contact John Wellnitz, phone 475-1518.

**HAMMOND ORGAN** teachers wanted to teach in their own homes. Call Grinnell Brothers, Ann Arbor, 662-5667.

**FULLER BRUSH** products for sale. Ph. 426-3387.

**JOB WANTED** wallpapering, painting, office or store cleanings. Phone 475-2072.

**C—Custom Built Homes**  
O—h! We Remodel too.  
U—can count on us  
N—o Job Too Small  
T—rim Inside & Out  
R—ough-in Only If  
Y—ou Want to Finish  
S—iding Aluminum, 5" Gutters  
I—mmediate Attention  
D—ALE COOK & CO.  
E—stimates, Free

**BUILDERS**  
Please Call  
475-8863

**DALE COOK**

**CALL NOW**  
SAVE \$\$\$  
Greenwood  
for  
Siding - Remodeling  
FREE ESTIMATES  
Call  
Chelsea 475-2400

**SECURITY GUARDS**  
Chelsea, Manchester  
Whitmore Lake areas.  
Phone 761-5315  
for appointment,  
or apply at  
280 S. Wagner Rd.  
Ann Arbor

**SANFORD SECURITY SERVICE, INC.**

**HOUSE FOR SALE** by owner. 1½ Moor Lake, 3-bedroom, minimum sided, attached garage, carpeting.

## Cards of Thanks

**IN MEMORIAM**  
In memory of our loving father, Frank L. Reed, God knew that he was suffering, that the hills were hard to climb so he closed his weary eyelids and whispered, "Peace be thine." Lord keep your arms around him and in your loving care make up for all he suffered while he was here, God gives us strength to bear it and courage to meet the blow but what it meant to lose him no one will ever know.  
Mr. Robert Reed.  
Mrs. James (Margaret) Schliz.  
Mrs. Ronald (Frances) Ferry.  
Mr. Richard Reed.

**IN MEMORIAM**  
In memory of my dear husband, Frank L. Reed, who passed away two years ago Nov. 23. Days of sadness still come o'er me. Tears in silence often flow for no one sees me weep while others are asleep. I miss you, through the days and nights and through the holidays though your chair is empty dear you're still here in many ways. You bid me no good-bye the day God called you home, but part of me went with you, my dear you're not alone. Sadly missed by his loving wife, Ethel.

**CARD OF THANKS**  
I want to thank each and every one at the Chelsea Community Hospital for their part in caring for me while I was there. You were also very good to me. My family and friends I thank for their cards, flowers, and calls, and especially my daughter, Elsie O'Dell, who did so very much for me. I shall never forget any of you. May God bless each of you.  
Mrs. Harold (Doris) Reilly.

**CARD OF THANKS**  
I wish to thank everyone for their wonderful help and kindness that has been given to me since I broke my hip.  
Ruth Schenk.

**IN MEMORY**  
In memory of son and brother, Larry Julian Policht, Sr., who passed away Thanksgiving Day five years ago.  
Mr. and Mrs. Harold Reilly and brothers and sisters.

**CARD OF THANKS**  
We wish to express our appreciation to all for the many thoughtful acts of kindness, expressions of sympathy, and floral and memorial tributes at the time of the loss of our loved one. We especially thank Pastor John Morris, Mr. and Mrs. Ronald Tenter, and the women who helped at our home after the service. We are sincerely grateful to all.  
The family of Doug Barth.

**Vatican City**—The Vatican recently reasserted the infallibility of the Roman Catholic Church, of its teachings and of the Pope in an attempt to answer critics among its own theologians.

**DEEP FREEZE?**  
Underlying 20 percent of the world's land, permafrost in some places extends only a short distance beneath the surface, but on Alaska's North Slope it reaches depths of 2,000 feet.

**TERMITE SPOTTERS**  
In the Australian Outback country, travelers can set their course by looking at 12-foot-high mounds of Meridionalis termites which always point north and south.

**DWINDLING RESOURCES?**  
There has been a lot of talk about the United States exhausting its valued natural resources. There's a good chance—the way things are going—that the great resource to fold up will be the American taxpayer.

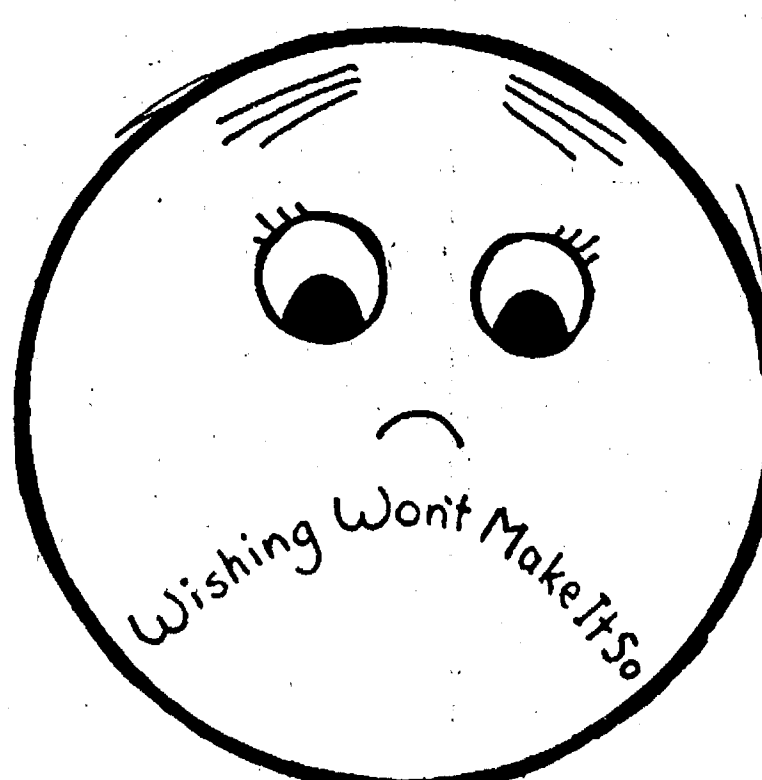
**TODAY'S THOUGHT**  
By LOUIS BURGHARDT

In our increasingly crowded and discontented world, we Americans have much to be thankful for. True, we too have certain pockets of crowded quarters — and good reason for discontent in many things . . .

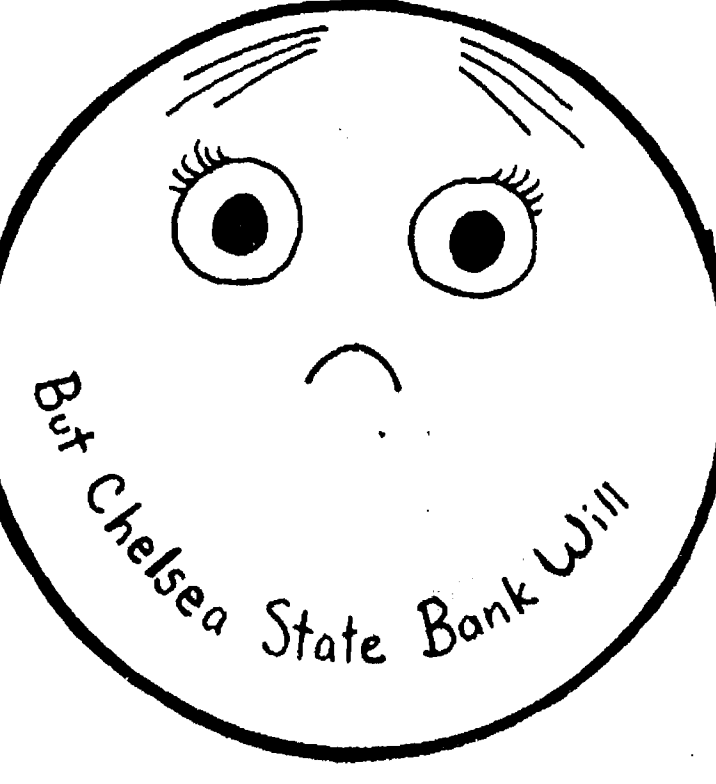
BUT — while we have trouble spots and blemishes, it should be noted that NO country has ever been found that did not have them too. Any one with a cents worth of common sense should know, in spite of our problems, the U. S. A. is still a land of liberty and freedom unequalled anywhere in this troubled world. Where else in this world can any one find a better place to prosper through individual resourcefulness? Where else can uncommon people stand together on common ground? Even with the sometimes weird antics of high officials and equally strange, hard to understand behavior of lesser people at lower levels, where else is the national character of people better than right here in our country? Where else is a government paying cash to, and paying bills for their people in need? (Yes, and even for some not in need!) Where else is a government sponsoring well over 1000 separate agencies for the well being, advancement and protection of its people? The list can go on and on. Endless almost. For all of this should not all of us give special thanks to God on Thanksgiving Day? . . . BURGHARDT FUNERAL HOME, 214 East Middle St., Chelsea, Mich. Phone 475-1551.

**SPECIALS**  
ICE BOX JAR  
Stuffed Olives . . . . . 57c  
ECKRICH ALL-MEAT  
Hot Dogs . . . 1-lb. pkg. 89c  
12-OZ. BOX BIRDSEYE FROZEN  
Squash . . . . . 2 for 29c  
12-OZ. CAN TROPICANA FROZEN  
Orange Juice . . . . . 36c  
NORTHERN  
Tissue . . . . . 4 roll pak 42c

Happy Thanksgiving to all!  
**KUSTERER'S**  
FOOD MARKET  
DIAL 475-2721 WE DELIVER



New Home  
New Car



Snowmobile  
Travel  
Christmas Club

**MAKE IT HAPPEN WITH CHELSEA STATE BANK**

**CSB**

35½ CUSTOMER HOURS  
Mon.-Thurs. . . . . 9-3  
Fri. . . . . 9-5:30  
Sat. . . . . 9-12  
305 S. MAIN  
Ph: 475-1355

## A1 USED CARS

AT OUR TRIANGLE LOT  
M-52 and Old Manchester Road

1973 PINTO 2-DR. Automatic	SAVE	\$1995
1973 PINTO 3-DR. Automatic	SAVE	\$1995
1973 LTD 4-DR. Like new	\$3195	
1973 LTD SQUIRE 8 Pass. with air	\$3995	
1971 CHEV Monte Carlo 2-dr.	\$2595	
1971 CHEV IMPALA V-8, Automatic	\$1995	
1971 FORD WAGON A Real Buy	\$1695	
1970 LTD 2-DR. A clean one owner car	\$1495	
1970 CHEV 4-DR. V-8, Automatic	\$1295	
1972 FORD ½ TON V-8, power steering	\$1995	
71 FORD ½ TON V-8, Like new	\$1995	
70 INTERNATIONAL ¾ Ton, 4-speed trans.	\$1695	
69 FORD 1 TON STAKE	\$1995	
69 FORD ½ TON Real clean	\$1395	

### CHEAPIES

67 FORD 2-DR.  
67 FORD WAGON  
65 MUSTANG 2-DR.



**OVER \$3,000,000.00**  
In land and home sales in our first 9 months!

We feel that's quite an outstanding record. Now, we've doubled our sales staff and added a full commercial department to better serve the Chelsea and Dexter areas. So, if you have a home, land, farm or business to sell, doesn't it make sense to call us? For professional service from a local Realtor, call,

**Real Estate One.**  
OF WASHTENAW  
REALTORS

ANN ARBOR 761-8313  
1300 S. MAIN

CHELSEA 475-8693  
1196 M-52

*We make things simpler for you*

**DEXTER LOCKER**  
DUNBAR MEATS

**MEATS THAT ARE GOOD**  
Fill Your Freezer While Prices Are Low!

**SIDES 69¢\*** **HIND 83¢\*** **FRONT 63¢\***

**DEER PROCESSING**

**CUSTOM SLAUGHTERING & PROCESSING**  
Subject to butchering and processing cost.

8083 MAIN ST. DEXTER 426-8466

1431 E. MICHIGAN YPSILANTI 483-7466

**NORTH ELEMENTARY SCHOOL NOTES**

**THIRD GRADE—**  
Teacher: Mrs. Lawler  
The class found out that \$11 means one hundred and eleven. They learned to write the number 11 and to count by ones and tens. They also learned to write the number 111 and to count by ones, tens and hundreds.

**FOURTH GRADE—**  
Teacher: Mrs. Schmidt  
Reporter: Tobin Boyd  
Cathy Williams, Kirk Hawks and Tobin Boyd had birthdays this month and we enjoyed their treats.

**FIFTH GRADE—**  
Teacher: Mrs. Coulan  
Third Grade art projects include speckled pictures made from crayon drawings over sandpaper. The design is then ironed onto another sheet of paper for a double picture.

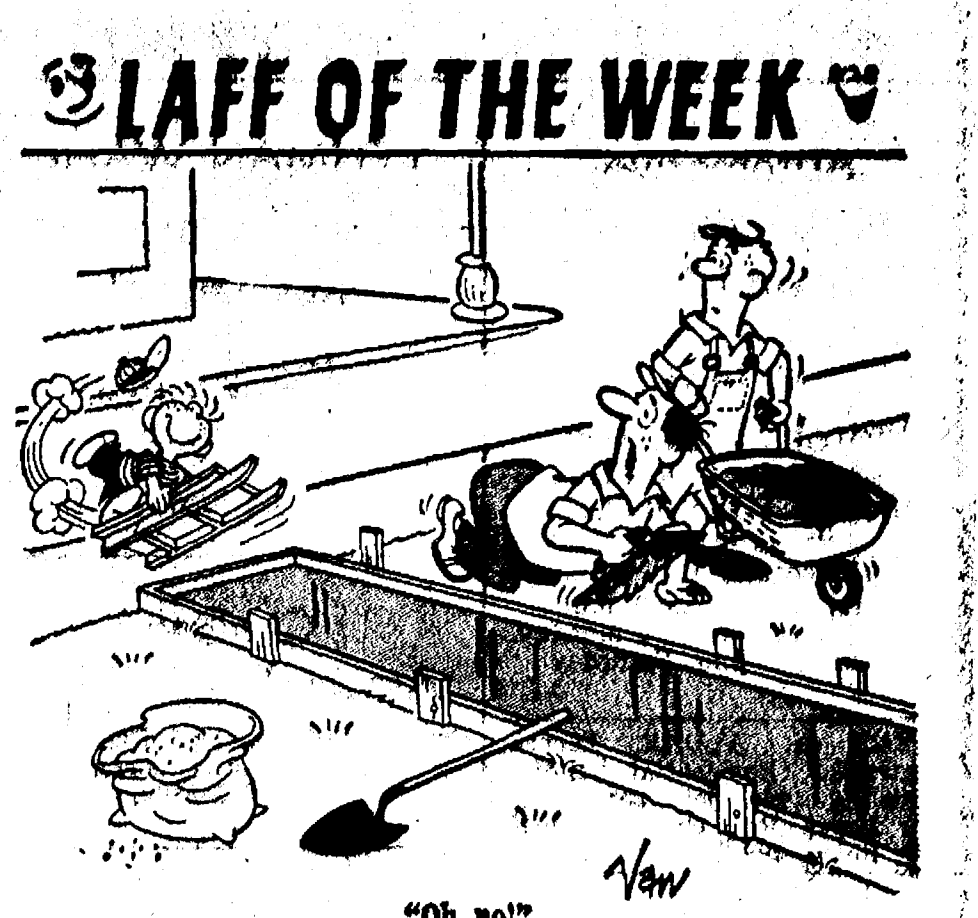
**SIXTH GRADE—**  
Teacher: Mrs. Coulan  
Third Grade art projects include speckled pictures made from crayon drawings over sandpaper. The design is then ironed onto another sheet of paper for a double picture.

**BEACH MIDDLE SCHOOL HONOR ROLL**

**First 6-Week Marking Period**

**5th GRADE—**  
Dawn Aplado, Jamie Atkinson (all A), Mark Barnes, Sherri Baysinger, Michael Benedict, Connie Bentley, Gayle Beyer, Karen Blanchard, Mary Beth Blanchard, Kent Bollinger, Kelli Borton, Julie Botsford (all A), Douglas Boyer, Brian Buck, Tracy Cattel, Karen Chappelow, Brenda Classon, Dawn Connell, Deborah Connell, Kelli Cook, Tina Cross, Karen Dault, Daniel DeSmyther, Catherine Donkin, John Dunn, David Dyson (all A), Alice Erke, Jim Jamie Foster, Dawn Fowler, Fitzsimmons, Bradley Flanagan, Jamie Foster, Dawn Fowler, Diane Gaiser (all A), Denise Geddes, Thomas Gilbreath, Marilyn Hafner (all A), Michelle Hafner, Linda Hamilton, Sarah Haselchardt (all A), Laurie Hastings (all A), Jeryl Herrick, Teresa Hoffman, Debbie Hombaum, Thomas Houle, Patricia Hume, Jill Jnes, Lori Johnson, Nancy Jo Johnson, Singoo Kim, Marie Klink, Bradley Knickerbocker, Debra Koepele, Sharon Kropf, Steven Kvarnberg (all A), John LaBarbara, Mark Lesser, Michael Lewis (all A), Daniel McGill, Elizabeth Merkel (all A), Joyce Milkey, Charles Moore, David Morris (all A), Jeannet Morrison, Ellen Musolf, Cheryl Nadeau, Teresa Neff, Janet Oberg, Ann O'Hagen, Lee Anne Owings (all A), Dan Pagliarini, Elizabeth Pfeifle, Douglas Pichlik, Valisa Pletcher (all A), Karen Popovich, Barbara Proctor, Nanette Push, Stratton Rademacher, Deanne Sandus, Sue Schafer (all A), Barbara Schardein, Clifford Scholz, John Scott, Vanita Scott, James Shepherd (all A), Kenneth Shepard, Kimberly Slater, Julia Smith (all A), Walter Soltysiak, Drew Sprague (all A), Kelly Stebbelton, Pamela Stephens, Mark Stevenson, Timothy Sweeny, John Thornbury (all A), Linda Vandervoort, Sally Vaughn, David Waldyke (all A), Joan Weber, Sandra Welshans, Dennis White, Elizabeth Wireman, Cynthia Wolter, Kimberly Wood, Michael Wood.

**6th GRADE—**  
Donald Aldrich, Albert Anderson (all A), Jerald Benjamin, Debora Bollinger, Bonnie Boyer, John Bulick, Carolyn Burkhouse, Laura Burns, Laurie Campbell, Elizabeth Collins, Penny Collinsworth, John Daniels, James Dowhal, Kimberly Dunn, Duana Evison, Bruce Fairbanks, Marc Feeney, Beth Flanagan, Susan German, Leslie Gilbreath, Leigh Ann Hafner, Janice Hamilton, Rebecca Harbaugh, Jeffrey Harook, Gregory Hastings, Diane Haworth, Todd Headrick, Holly Hoffmeyer, Jeffrey Jahnke, Robert Jennings.



**Now Open!**

**BOYER AUTOMOTIVE SUPPLY**  
DEXTER BRANCH  
8099 MAIN ST.  
AT STOP LIGHT IN CENTER OF TOWN

**Complete Lines of AUTOMOTIVE PARTS and ACCESSORIES**

**PHONE 426-4688**

**STORE HOURS**  
Monday thru Friday 8:30 am-5:30 pm  
Saturday 8:30 am-4 pm

**ANN ARBOR STORE**  
Monday thru Friday 8 am-8:30 pm  
Saturday 8 am-4 pm  
Sunday 10 am-2 pm

**DAVIS**

Has some of the challenge gone out of your life? Does your job still give you the thrill and satisfaction it once did? If not, it may be time to consider putting that back into your life!

There is still one last frontier for the man or woman looking for that fine edge of competition. There is still one rapidly growing and richly rewarding profession for those people that need the thrill of excellence. You may never have considered yourself a sales-oriented person but look into your daily behavior—do you enjoy influencing others, do you have impatience for people who procrastinate, are you able to make decisions and cut through the myriad of red tape and extraneous material to get to the heart of the matter? Are you able to appreciate the other person's point of view and understand his perspective? Do you have a set of principles and values that you live by? Are you firm in your convictions? Do you stay on track? Are you self-disciplined to start and finish your job?

If you can answer "yes" to the majority of these questions, you probably have innate sales ability. National statistics show that 65% of the people in the \$25,000 plus income category are in the field of professional sales.

If you have the dynamics for successful selling we can train you to achieve results beyond your present expectations. Education makes the difference between the top producer (the high dollar earner) and the average or mediocre sales producer.

Our formal training program will begin shortly. Come in and investigate your capabilities for success and better earnings. Our selection system will allow you to predict your potential for success in our business. Your inquiries are confidential. Call Pat Davis, 769-8000.

**Davis & Davis, Inc., Realtors**  
1111 E. STADIUM  
ANN ARBOR 769-8000

**You Have A Million Dollar Invention or Idea!**  
and you don't know how to turn it into cash!

Many firms are waiting for you... but do you know where they are? ...

How many times have you said, "I've got a good thing... but where can I go with it? ... What can I do?" ...

How many times have you tried to show your idea, or invention... and have been turned away! ...

Or... how many times have you tried to see the President of a Company... and he's not available! ...

Worst of all... you probably dropped your search in disgust... and now... you find your idea, or invention, is making money for someone else! ... OH! ... if you only knew where to go at the time! ...

Most people are too busy earning a living to be able to pursue the development of their idea, or invention! ...

Now... because of my Management Consultant experience... you can do something about your idea or invention, because it is not too late! ... My 27 years experience as an Executive in Business knows that it is never too late to make money... I will give you a Personal Report evaluating your idea, or invention... and I will do the trying for you to contact the right firm to turn your idea, or invention, into cash! ...

And it isn't going to cost you a lot of money to find out what you have! ... all it costs you is \$10.00 to register your invention, or idea, with me... and I take it from there! ... you get my personal report! ... and let me start some action! ...

Also!... here is a Free Tip to protect yourself... in case you feel that someone is trying to steal your idea, or invention... Mail all the complete information to yourself in a registered letter, but don't open same unless in the future you have to show proof of your invention, or idea... Now!... here is all you have to do... Send me complete information on your invention, or idea... and \$10.00 Registration Fee with the below application and I will start action from there...

**APPLICATION**

J. P. Holtach, Jr., Management Consultant  
9680 Dexter-Pinckney Road  
Pinckney, Michigan 48169

I know that I have a good invention, or idea, and don't know how to go about cashing it in! ... Enclosed, please find my \$10.00 Registration Fee and my complete information of my invention, or idea. I understand that I am giving you complete authority to represent me with my invention, or idea... and that you will take action to help me search for the right marketing of my invention, or idea. I realize this will mean saving money, and effort, on my part.

Name (Print) \_\_\_\_\_  
Signature \_\_\_\_\_  
Address \_\_\_\_\_  
City \_\_\_\_\_ State \_\_\_\_\_ Zip \_\_\_\_\_







